

The background image shows the exterior of a modern medical building. The building has a mix of light-colored stone and dark grey panels. There are several palm trees in front of the building. An American flag is flying on a tall pole to the right. The sky is clear and blue. The text is overlaid in white on the image.

Regional Center for Border Health, Inc./San Luis  
Walk In Clinic, (RHC) Integrated Primary Care-  
Behavioral Health Services  
School-based Mental Health Education  
Best Practice that Serve Rural Community Youth

Thursday October 28, 2021



# Serving Yuma, La Paz and Mohave Counties

## Patient-Centered Medical Home

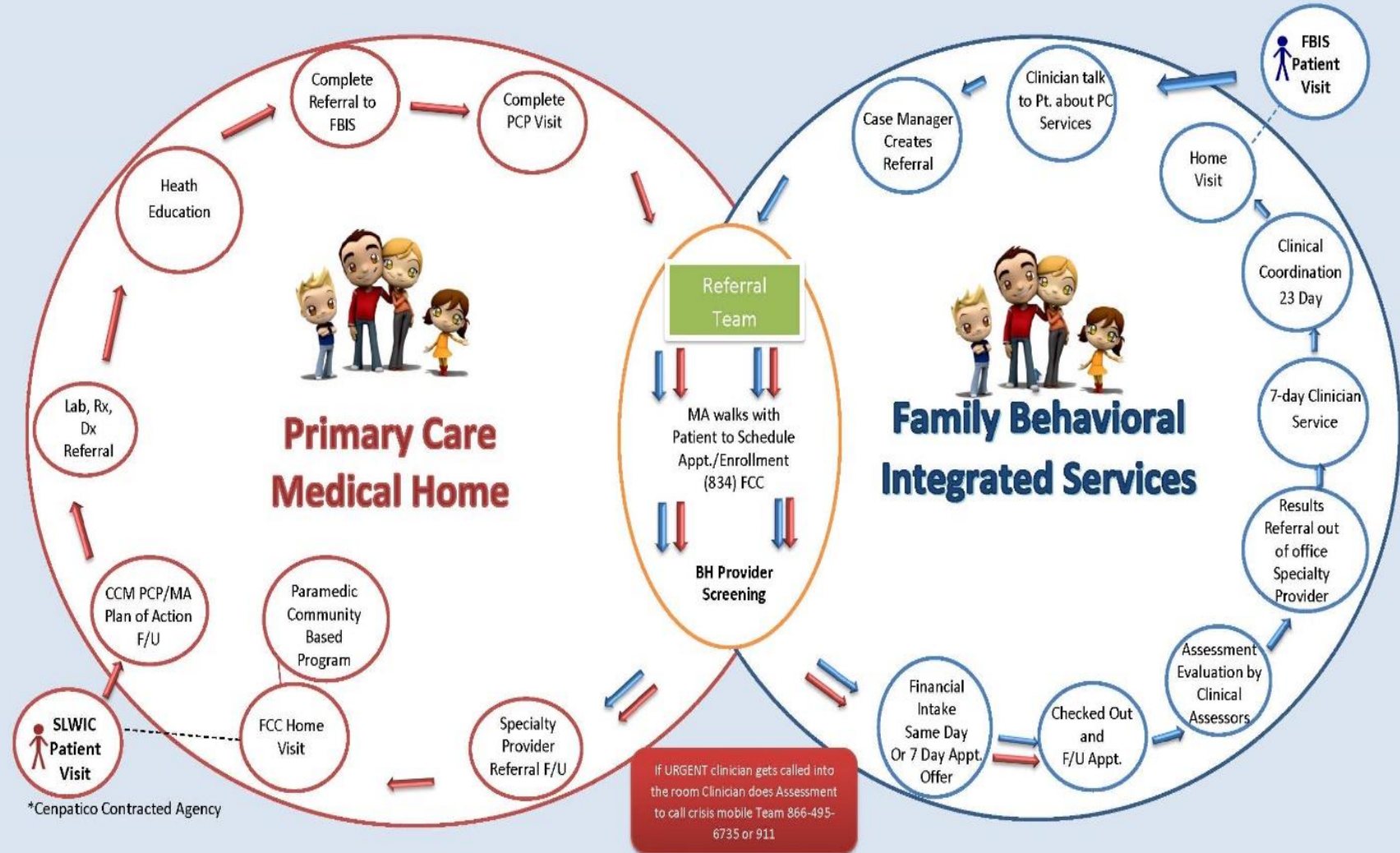
“A Medical Home is defined as primary care that is accessible, continuous, comprehensive, family centered, coordinated, compassionate and culturally effective”.

- Reaching Rural Distressed Communities and Increasing Access to Affordable Healthcare





# RCBH SLWIC PCMH - Family Behavioral Integrated Services Intake Coordination of Care \*





# School Based Services

## ✓ **School Initiatives;**

MOU with Somerton School District # 11 to coordinate BHS by:

- 1) Increase in obtaining school assessments, IEP's
- 2) Requesting teachers to complete Vanderbilt ADHD observation forms
- 3) SLWIC BHS's Case managers attend IEP's
- 4) School staff to attend CFT meetings
- 5) Ensuring we send completed psychological evaluations to school
- 6) Other; After School Activities (Nutrition Classes for Kids, exercise classes)

# Center for Children Special Needs

&

## Autism



## Trends in Diagnosis and or Behaviors Reported

---

1. Autism and ADHD
2. Speech Delay
3. School Violence
4. Bullying
5. High Dropout Rates
6. Suicide
7. Substance abuse



## Barriers in Providing with School-based Services

- ❖ We have not been providing individual or group counseling on school grounds during COVID-19 Pandemic.
- ❖ RCBH/SLWIC-BHS Staff responds if there is a crisis in the school.



### Other Barriers:

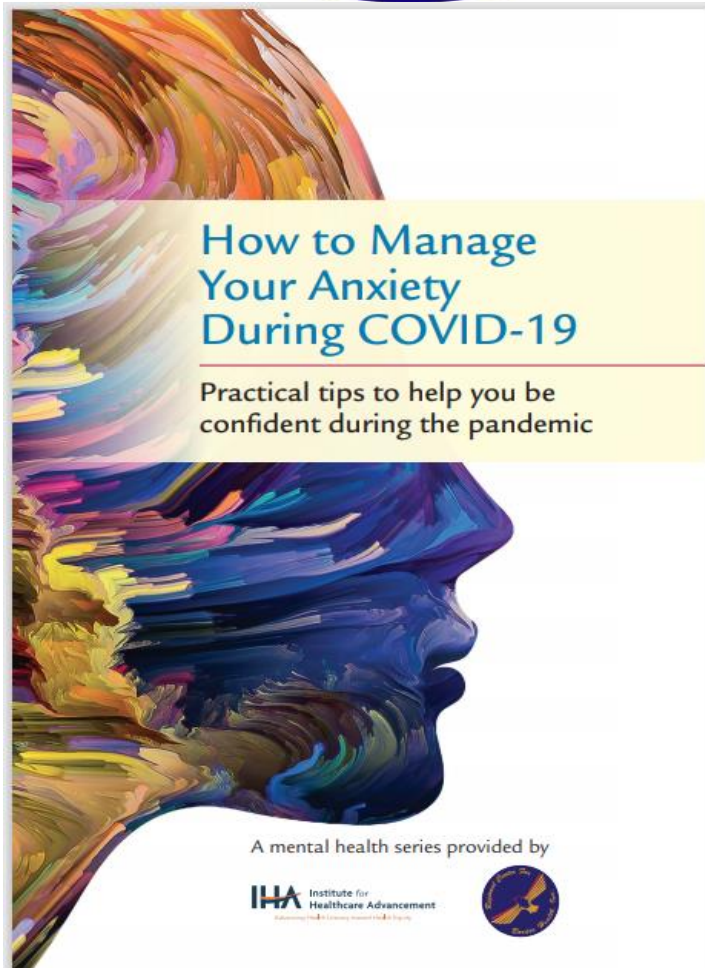
- Uninsured Parents worry about financial constraints ( high cost of Rx)
- Stigmas related to mental health problems
- Shortages of Licensed Mental Health Providers
- Transportation ( uninsured population)



# Needed Community and School-Based Intervention Programs

- Integrated programs of education and prevention in the school
- Establish MOUs with the schools to provide telehealth visits at SLWIC including behavioral health services as needed or identified by the school.





## ❖ Other Activities & Services to Schools and Families Include:

- We offer free monthly educational workshops to the community
- RCBH has been conducting presentations of services we offer to migrant program, PTO meetings, teachers Inservice trainings
- RCBH has an Autism center with an environment conducive to treatment.
- RCBH has two ABA therapists
  
- We offer two ABA parenting skills groups, one in English and one in Spanish. The groups feature; diagnosis process, autism spectrum disorder, attention deficit/hyperactivity disorder, managing behavior issues and teaching new skills.
- Youth mental health first aid training to the community. (counselors, law enforcement and teachers)





# Q & A

---

Ines Gonzalez, MBA

Behavioral Health Executive Director

[igonzalet@rcfbh.org](mailto:igonzalet@rcfbh.org)

Telephone: (928) 627-9222

[www.rcfbh.org](http://www.rcfbh.org)