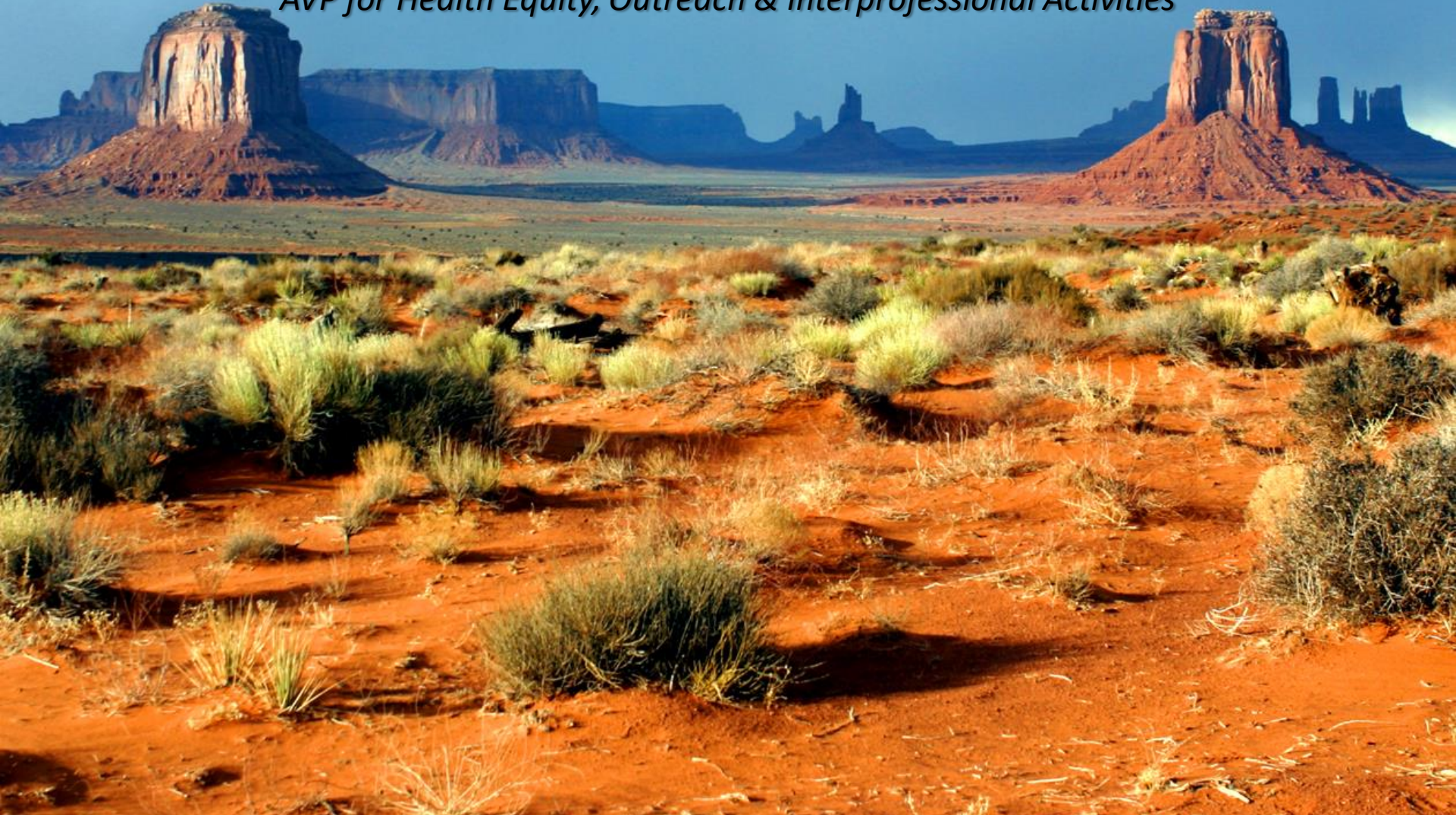


Arizona Area Health Education Center

04/15/2020 Arizona Telemedicine Council

Daniel Derksen MD, Acting Director, AzAHEC
AVP for Health Equity, Outreach & Interprofessional Activities



Since 1984 the AzAHEC mission:
*to enhance access to quality primary care
by improving the supply and distribution
of health care professionals through
academic community partnerships in
rural and medically underserved areas.*

Five AzAHEC Regional Centers

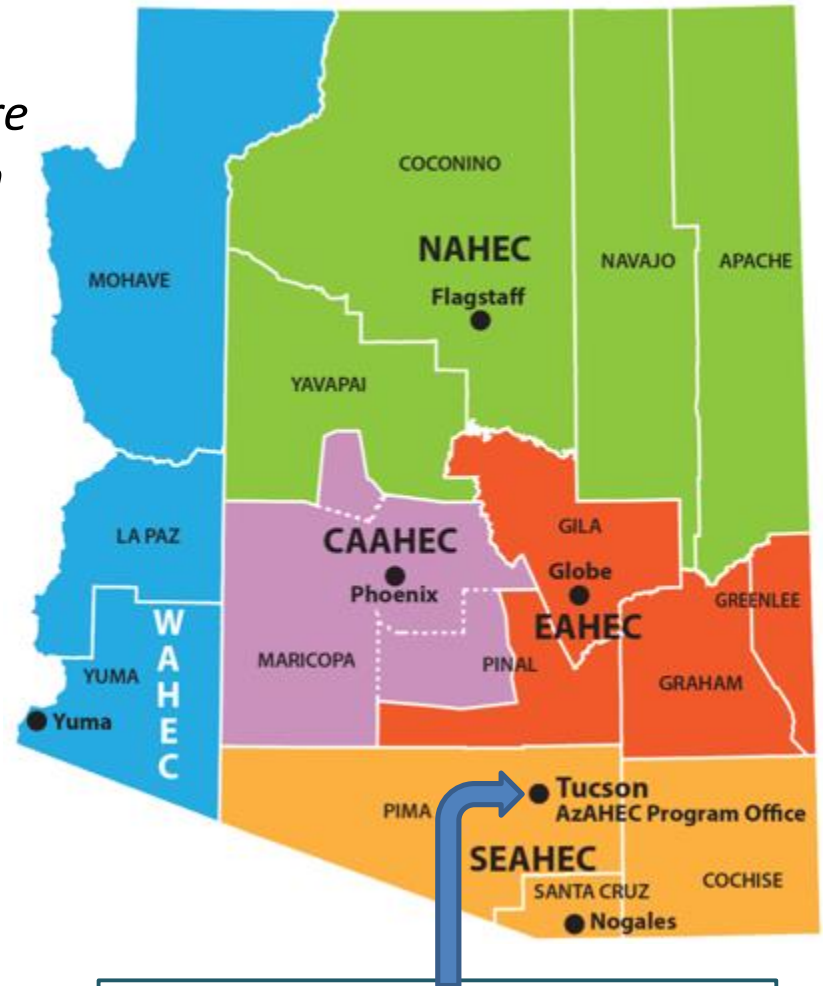
Central Arizona AHEC (CAAHEC) Phoenix

Eastern Arizona AHEC (EAHEC) Globe

Northern Arizona AHEC (NAHEC) Flagstaff

Southeast Arizona AHEC (SEAHEC) Nogales

Western AHEC (WAHEC) Somerton



<https://azahec.uahs.arizona.edu/about/home>



THE UNIVERSITY OF ARIZONA
Arizona AHEC
Area Health Education Centers

AzAHEC Program Office
University of Arizona Tucson

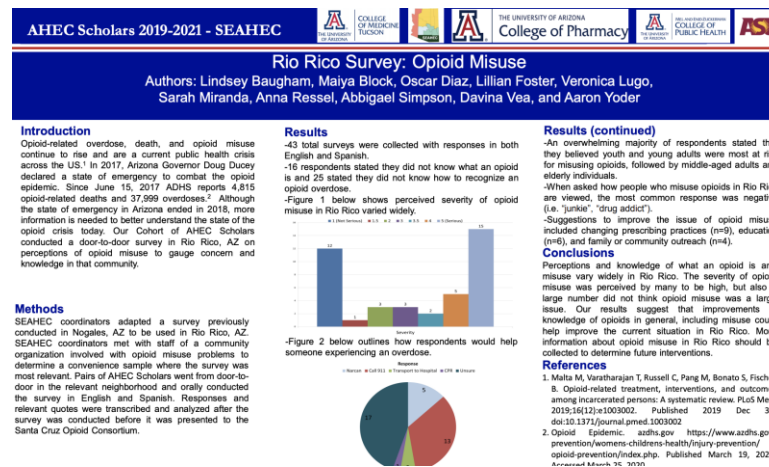
8th Annual Interprofessional Rural Health Professions Conference

April 3 – 4, 2020

Conducted Virtually via Zoom Webinar

Had over 300 Unique Participants

Displayed 50 Posters



<https://azahec.uahs.arizona.edu/events/8th-annual-interprofessional-rural-health-professions-conference>



THE UNIVERSITY OF ARIZONA
Arizona AHEC
Area Health Education Centers

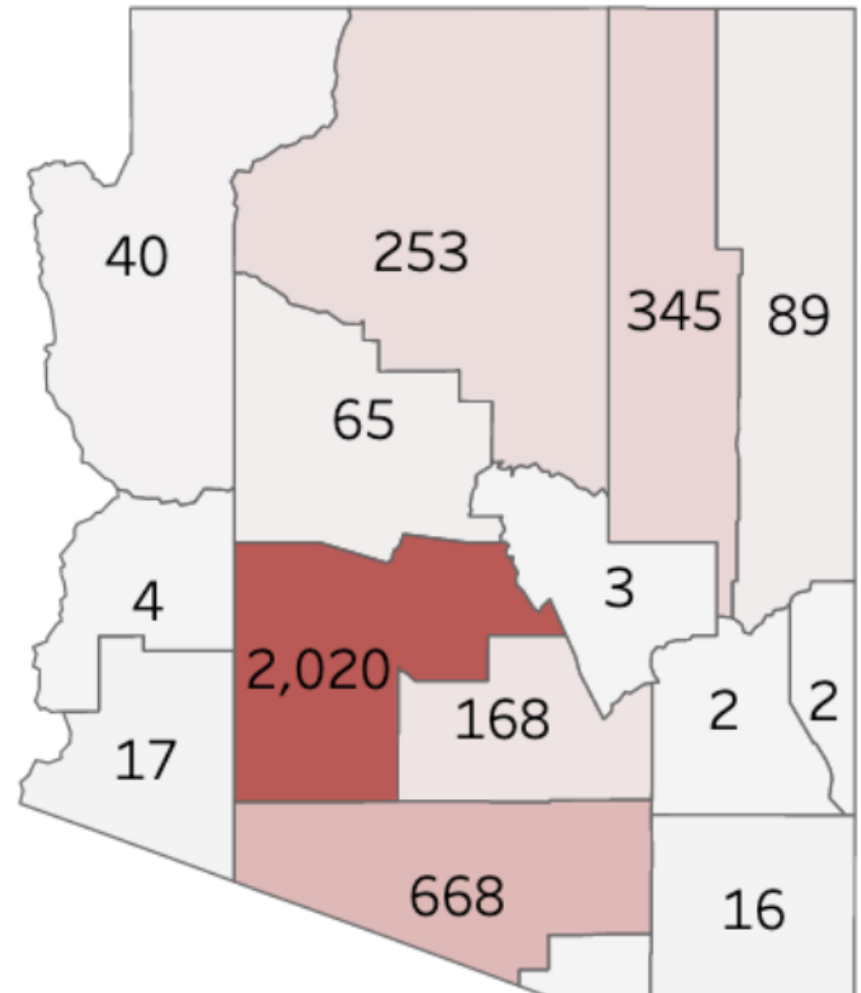




ARIZONA DEPARTMENT OF HEALTH SERVICES
Health and Wellness for All Arizonans

Monday April 13, 2020

AZ COVID
Cases 3,702
Deaths 122



<https://www.azdhs.gov/preparedness/epidemiology-disease-control/infectious-disease-epidemiology/index.php#novel-coronavirus-home>



The University of Arizona
Health Sciences

COVID Tribal Town Hall April 10, 2020



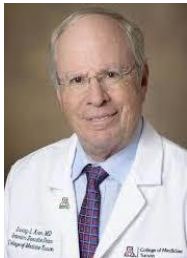
Michael D. Dake, MD is Senior VP directing strategic integration of undergraduate and graduate education, research, service & clinical activities across the UArizona Health Sciences Colleges of Nursing, Medicine (Phoenix & Tucson), Pharmacy, and Public Health working with Banner University Medical Centers in Tucson & Phoenix. mddake@arizona.edu



Karen Francis-Begay, M.A. is the Assistant Vice Provost, Native American Initiatives at the The University of Arizona. *Contact Karen for questions relating to support and resources for Native American students.* kfbegay@arizona.edu

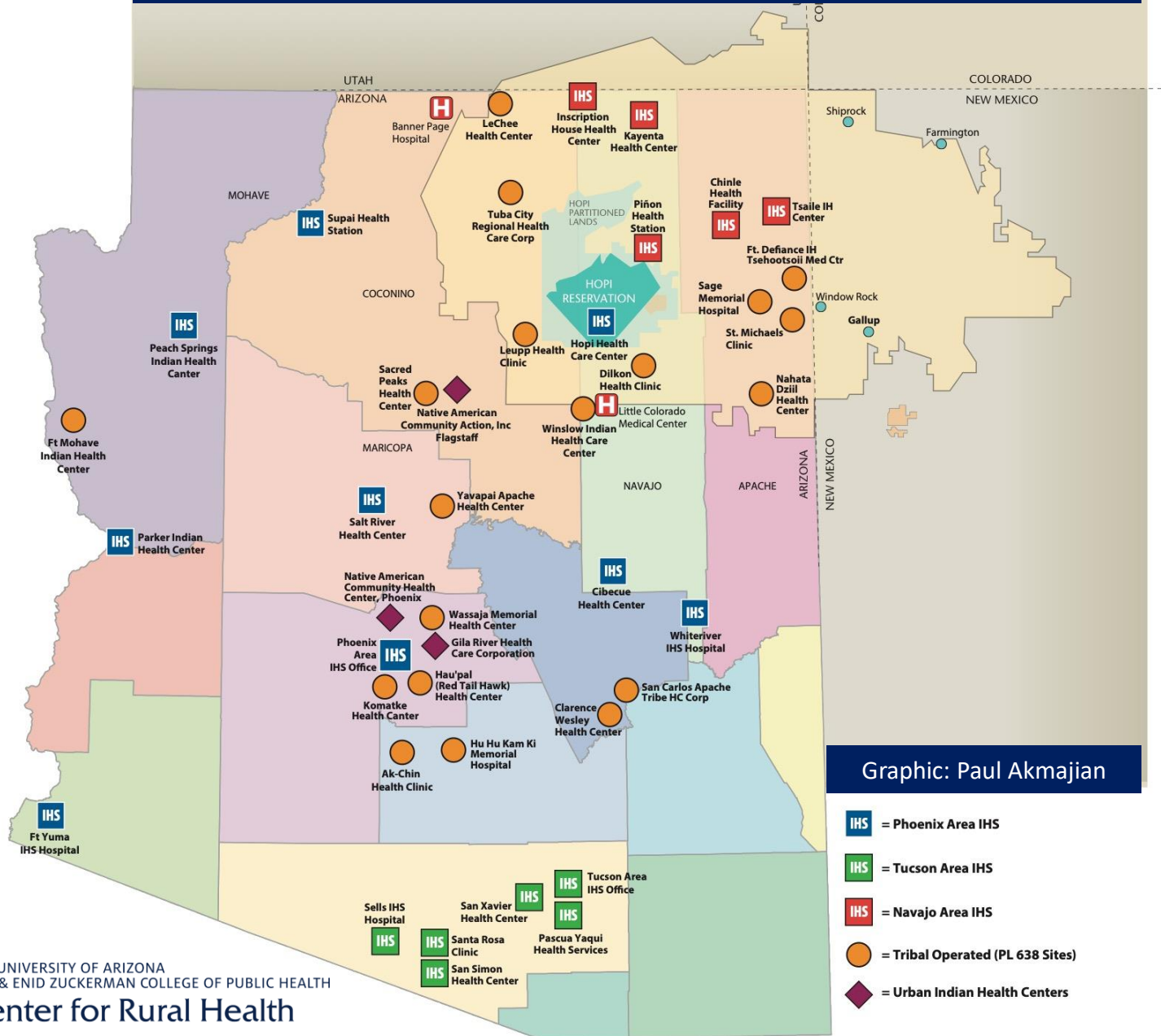


Dan Derksen, MD is Associate VP for Health Equity, Outreach & Interprofessional Activities and director of the Arizona Center for Rural Health & Area Health Education Center Programs. *Contact Dr. Derksen for questions / needs about testing kits, grant opportunities, interprofessional health professions education.* dderksen@arizona.edu



Irv Kron, MD is Senior Associate VP University of Arizona Health Sciences and a thoracic and cardiovascular surgeon at the Banner University Medical Center in Tucson. *Contact Dr. Kron for questions / needs about transfers to BUMC hospitals, specialist consultation.* kron@arizona.edu

Arizona's IHS and Tribal-Run Hospitals and Health Centers



Graphic: Paul Akmajian



THE UNIVERSITY OF ARIZONA
MEL & ENID ZUCKERMAN COLLEGE OF PUBLIC HEALTH
Center for Rural Health

Rural Hospital Flexibility Program

Critical Access Hospitals (CAHs)

≤25 beds in rural area

24hr/7d Emergency Dept

>35mi from another facility

18 Rural + CAH eligible \$80,000 in COVID HRSA Funding via AzCRH NoA in April

Banner Page & Banner Payson Hospitals

Benson Hospital, Cobre Valley (Globe)

Carondolet Holy Cross Hosp (Nogales)

Copper Queen Community Hosp (Bisbee)

Gila River (Hu Hu Kam) Health Care

Hopi Health Care Center (Polacca)

La Paz Regional Medical Ctr (Parker)

Little Colorado Med Ctr (Winslow)

Navajo HC Corp Sage Mem Hosp (Ganado)

Parker Indian Health Center (Parker)

San Carlos Apache Healthcare Corp.

White Mt. Regional Med Ctr (Springerville)

Wickenburg Community Hospital



THE UNIVERSITY OF ARIZONA
MEL & ENID ZUCKERMAN COLLEGE OF PUBLIC HEALTH
Center for Rural Health

Arizona Center for Rural Health

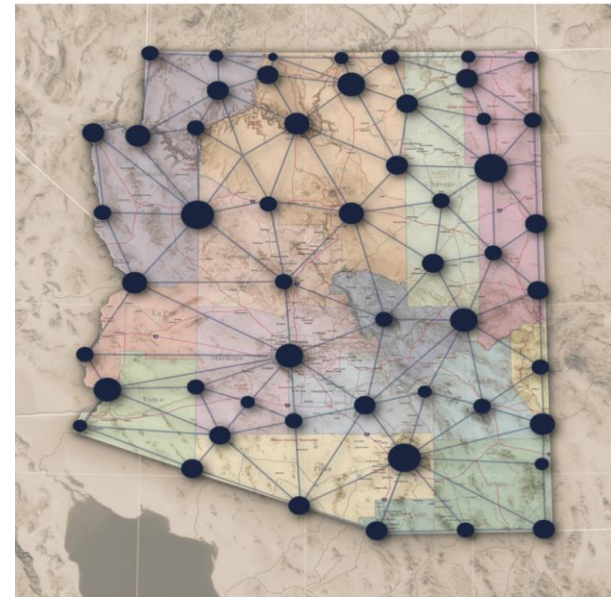
Since 1980 AzCRH mission: to improve the health & wellness of rural & vulnerable populations.

Programs & Initiatives:

1. State Office of Rural Health
(Est. 1990 state-federal)
2. Rural Hospital Flexibility
Program (Est. 1999 HRSA)
3. Health Workforce Database

Arizona Primary Care Physician Workforce Report

OCTOBER 2019



THE UNIVERSITY OF ARIZONA
MEL & ENID ZUCKERMAN COLLEGE OF PUBLIC HEALTH
Center for Rural Health



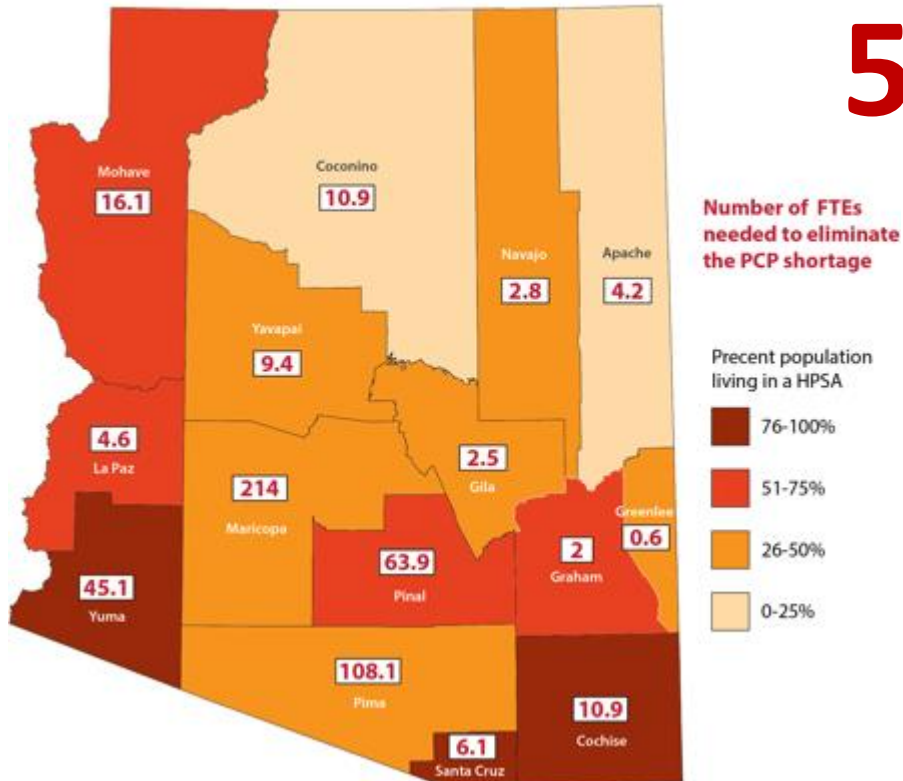
The University of Arizona
Health Sciences

<http://crh.arizona.edu>

Example: Health Workforce Data

Primary Care Physician Shortage

Percent Living in Primary Care Shortage Areas (HPSAs) and
Number of Providers Needed to Eliminate Shortage (2018)



563 Needed Now

1,941 will be
needed by 2030

2019 AZ Legislative Session Gains

2019-20 State Appropriation	Rural, Urban Underserved Health Policy Issue
\$3.0 M	Medicaid Graduate Medical Education (GME) with \$7 M federal match total = \$10 M, expanding to total \$30 by 2022
\$8.0 M	Expand Med Students in Primary Care, Tuition Remission
\$3.0 M	Expand Rural Broadband
\$1.6 M	Continue KidsCare (CHIP)
\$1.0 M	Rural Prenatal Telemedicine Equipment
\$0.75 M	State Loan Repayment
\$0.75 M	North Country Teaching Health Center

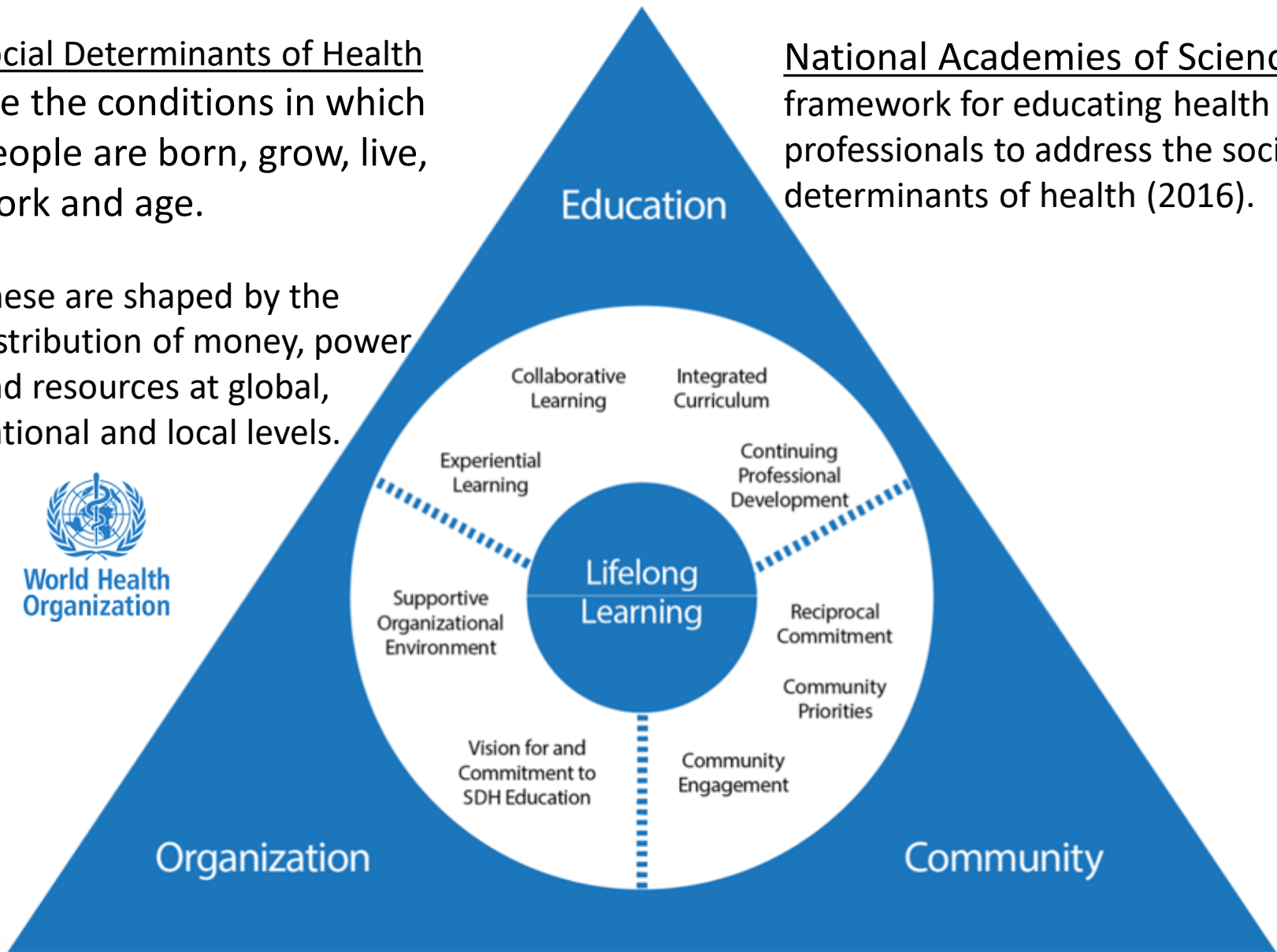


Social Determinants of Health are the conditions in which people are born, grow, live, work and age.

These are shaped by the distribution of money, power and resources at global, national and local levels.



National Academies of Sciences framework for educating health professionals to address the social determinants of health (2016).



Interprofessional Health Professions Education: Experiential, Collaborative Learning; Integrated Curricula; Continuing Professional Development



- UArizona Colleges of Medicine Phoenix & Tucson, Nursing, Public Health, & Pharmacy
- Clinical & Professional Skills Center, OSCE, Std. Patient
- Center for Transformative IP Health Education
- Online IPE, Certificates, Degrees
- Simulation (ASTEC)



THE UNIVERSITY OF ARIZONA
Arizona AHEC
Area Health Education Centers

AzaHEC Program Office
University of Arizona Tucson
5 AHEC Regional Centers
7 Rural Health Professions Programs
5 UAHS Colleges + CON ASU, NAU



THE UNIVERSITY OF ARIZONA
MEL & ENID ZUCKERMAN COLLEGE OF PUBLIC HEALTH
Center for Rural Health

Az State Office of Rural Health
AzSHIP, AzFlex: 15 CAHs, 24 RHCs, 20
FQHCs in over 100 AZ clinical sites

Organization: University of Arizona
Supportive Environment, Vision &
Commitment to Social Determinants IPE

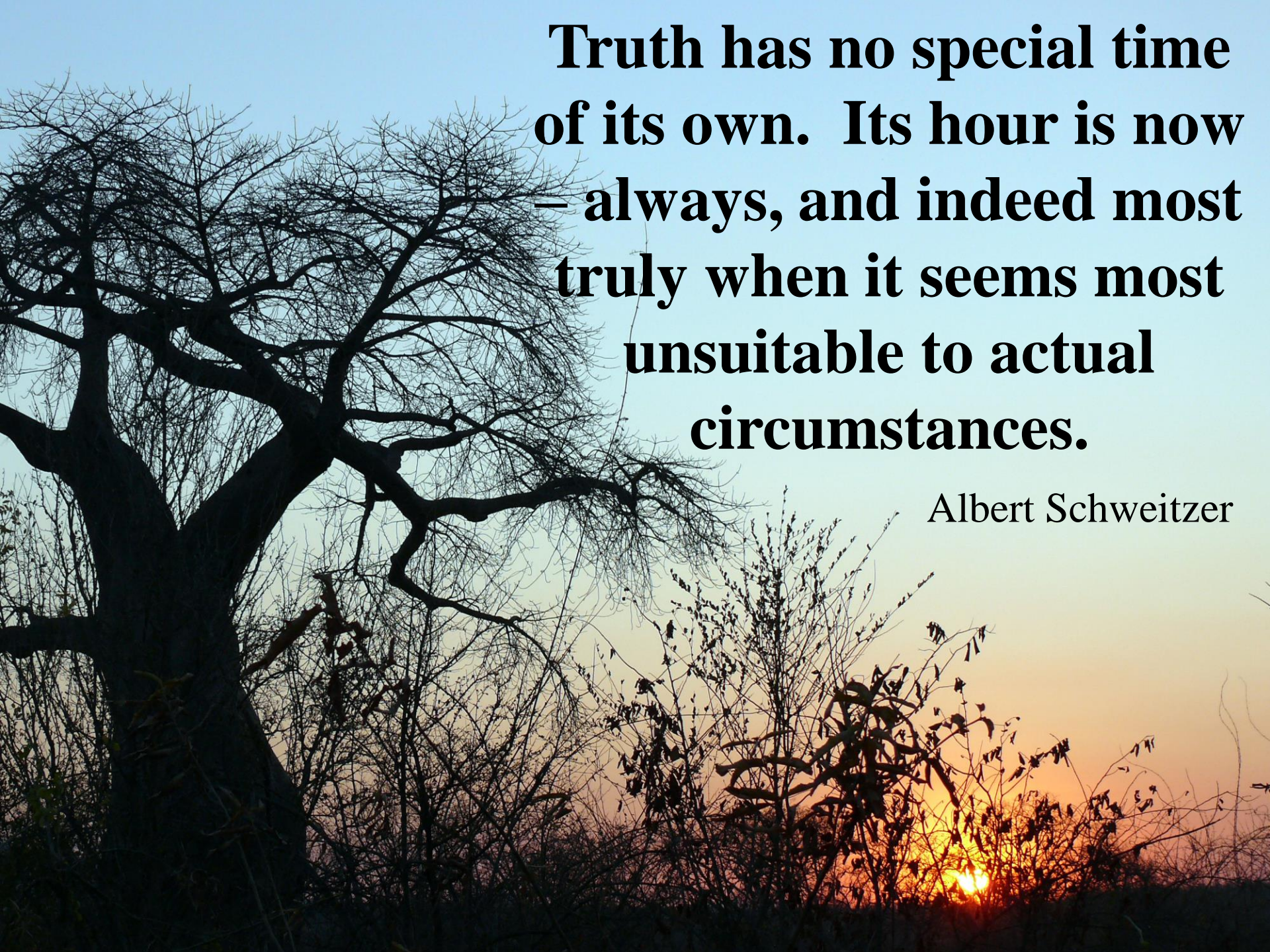


Community:
Community Engagement, Community
Priorities, Reciprocal Commitment

Adapted from: National Academies of Sciences (2016) framework for educating health professionals to address the social determinants of health.



The University of Arizona
Health Sciences

A large, leafless tree in silhouette against a sunset sky. The tree's branches are intricate and spread across the left and center of the frame. The sky transitions from a pale blue at the top to a warm orange and yellow near the horizon where the sun is setting. The sun is partially obscured by the branches of a smaller bush in the foreground on the right.

**Truth has no special time
of its own. Its hour is now
– always, and indeed most
truly when it seems most
unsuitable to actual
circumstances.**

Albert Schweitzer