



**“EMPOWERING COMMUNITIES...
INSPIRING HOPE.”**

June 18, 2015

Melinda Vasquez
Chief Officer
Cultural & Community Affairs

Our Core Values

- 🍎 Respect
- 🍎 Whole Person Health
- 🍎 Innovation
- 🍎 Voice & Choice
- 🍎 Empowering Independence
- 🍎 Responsible Stewardship
- 🍎 Always Excel
- 🍎 Accountability
- 🍎 Meaningful Partnerships



Who We Are



Approach to Integrated Care



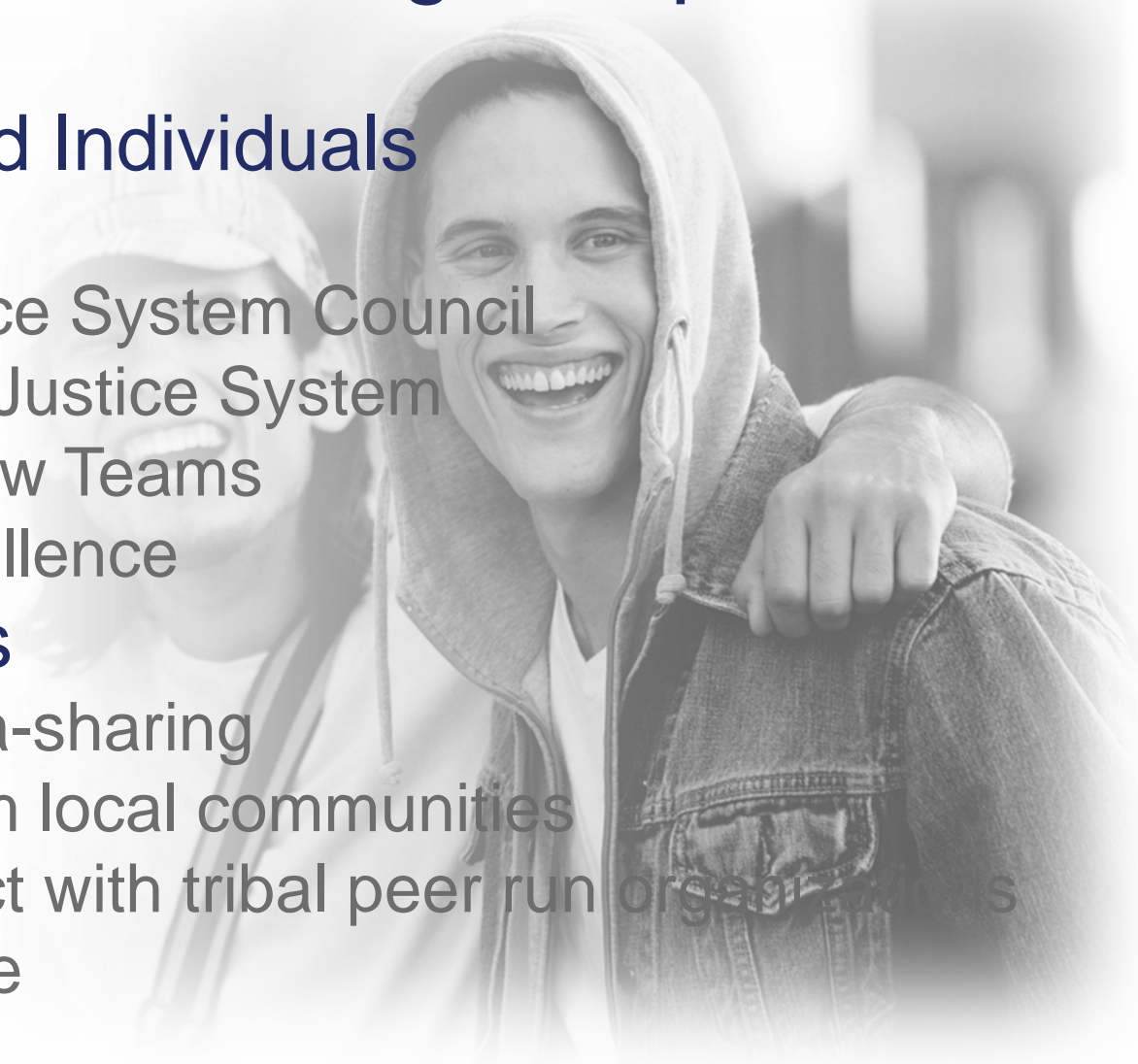
Programs for Target Populations

🍎 Justice-Involved Individuals

- Judges line
- Regional Justice System Council
- Hiring a VP of Justice System
- Prisoner Review Teams
- Center of Excellence

🍎 Tribal Members

- Enhanced data-sharing
- Tribal staff from local communities
- Plan to contract with tribal peer run organizations
- Tribal Warmline



Programs for Target Populations

🍎 Members with Developmental Disabilities

- Specialized hospital and residential facility
- Center of Excellence
- LifeShare program

🍎 Children in Foster Care

- Regional Children's Steering Committee
- Center of Excellence to reduce removals, decrease disruptions, and support reunification
- Trauma-informed care training

Crisis Services Concepts

Crisis and Nurse Line lead by NurseWise

Regional Crisis Operations Center in Tucson

Specialized services for members with developmental disabilities, children in foster care, and HR/HC members

Added mobile teams and community based crisis programs

Innovative crisis services for American Indians

D-SNP

- 🍎 Currently in place with 3.5 star rating
- 🍎 Contracted with providers across the region
- 🍎 Dedicated Medicare staff
 - Compliance
 - Finance
 - Integrated Care Administration
 - Contracts

Overview of New Contract: Outcomes

Reduce percentage of adults in jail with MH and SUDs from 70% by 15% in the first three years and 30% in seven years

Increase the percentage of members stabilized in the community following a face-to-face crisis visit by 10% in year one, 15% in year two, and 20% in year three

Increase life expectancy of adults with SMI by 11 years in seven years

Reduce recidivism rate for juveniles in detention from 40% to 25%

Improving Care for our Members

Programmatic Focus on Integrated Care Model, Tribal, Justice System, Crisis Center, CMDP, Employment, etc.

Overview of New Contracts: Outcomes (Continued)

Increase penetration rate for children in foster care (95%), birth to five (10%), and transition age youth (15%)

Reduce Emergency Department days for youth with IDD to 10 days total year

65% of American Indians will have a Comprehensive Health Record in three years and 90% in seven years

Increase the percentage of services spent on PFRO delivered services by 100% in three years and increase employment rates to 32% in four years

Improving Care for our Members

Programmatic Focus on Integrated Care Model, Tribal, Justice System, Crisis Center, CMDP, Employment, etc.

Our Offices

Main Office: 333 E Wetmore Road, Tucson



Other sites:

Tempe: 1501 W Fountainhead Pkwy, Suite 360

Casa Grande: 211 N Florence St, Suite 2

Yuma: 2755 S 4th Ave, Bldg 3, suite 102

Sierra Vista: (TBD)

Questions?

Contact information

☎ Customer Service 866-495-6738

☎ www.cenpaticointegratedcareaz.com

Melinda Vasquez

Chief Officer, Cultural and Community Affairs

480-317-6505