



ARIZONA TELEMEDICINE PROGRAM

Arizona Telemedicine Council Meeting



Amanda Aguirre
President & CEO

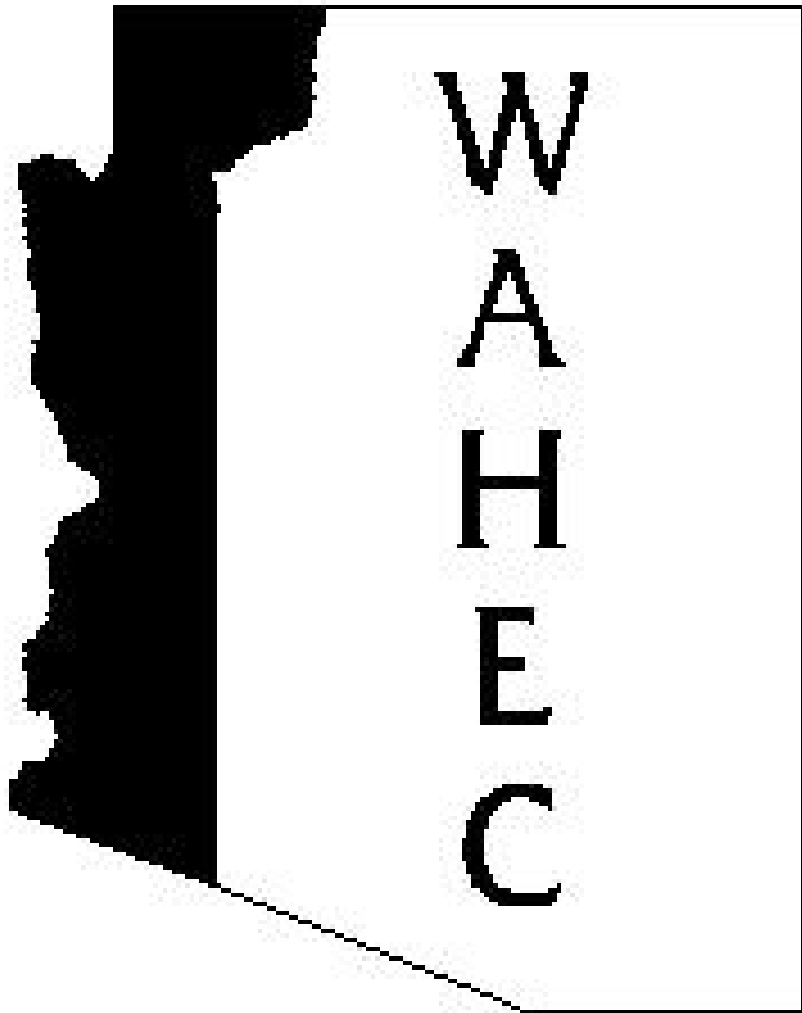
Regional Center for Border Health, Inc.

San Luis Walk In Clinic, Inc (RHC)

amanda@rcfbh.org



Regional Center for Border Health, Inc./WAHEC
and
San Luis Walk In Clinic, Inc. (RHC)



Western Arizona Area Health Education Center

- **The principal mission of Arizona's Area Health Education Centers (AHEC's) is to improve the health status of Arizona's rural and medically underserved communities through the improvement of retention, distribution, supply, diversity, quality and efficiency of health professionals serving these populations.**

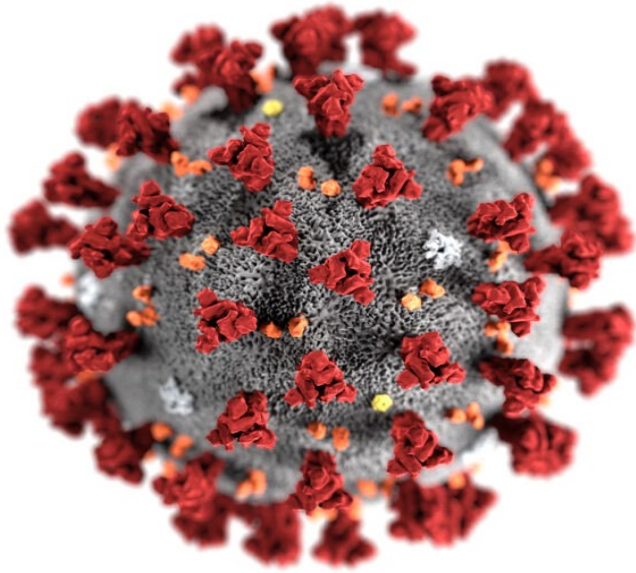


San Luis Walk-In Clinic, Inc.
Integrated Behavioral Health Services
10 facilities throughout Western AZ
21 MDs **16 Licensed BH**
20 FNP, PA



Reaching Rural Distressed Communities to Increasing Access to Affordable Healthcare and Promoting Vaccine Confidence





RCBH/San Luis Walk In Clinic, Inc. (RHC) Year to Date Testing (3/31/22)

- **Yuma County** Total COVID-19 Tests: 411,590
- * San Luis Walk-In Clinic, Inc. Total Tests: 252,587
(61% of all individuals tested in Yuma County, Arizona)

La Paz County Total COVID-19 Tests: 41,019

SLWIC-Parker Walk In Clinic (opened in 3/20/2021);
27,475 COVID-19 tests

Mohave County Total COVID-19 Tests: 411,531

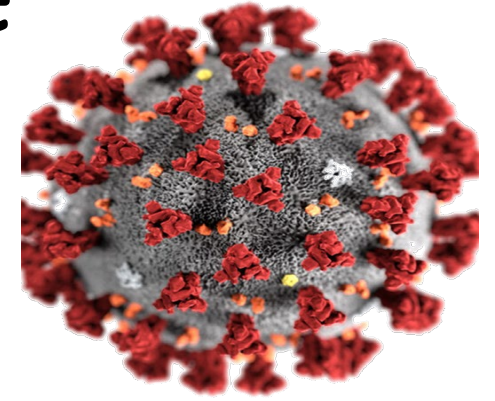
Lake Havasu Pediatric and Family Center Total Tests
(opened in 10/2021)

Vaccines given YTD : 73,110





HRSA RHC Vaccine Confidence



Emergency Rural Health Care Grants

Emergency Rural Health Care Grants

The Emergency Health Care Grant Program provides up to \$500 million in grant funding to help broaden access to COVID-19 testing and vaccines, rural health care services, and food assistance through food banks and food distribution facilities.

This Application Guide

Track One: Recovery Grants must be used in relation to the COVID-19 pandemic and to support immediate health care needs, to help prepare for a future pandemic event, or to increase access to quality health care services and improve community health outcomes.



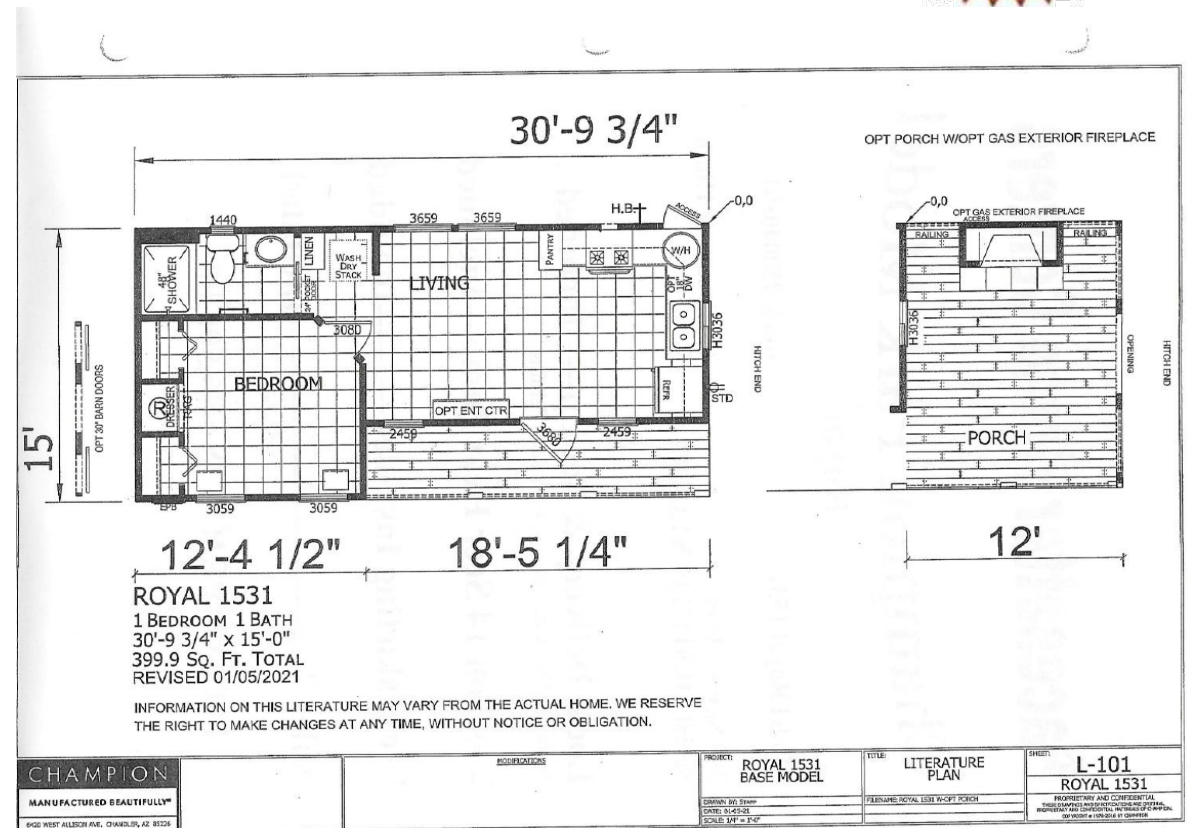
Track Two: Impact Grants must be used in relation to the COVID-19 pandemic to solve regional rural health care problems and to support the long-term sustainability of rural health care.





Parker Transitional Living Community

A tiny house model concept 650 sq ft is proposed for living quarters



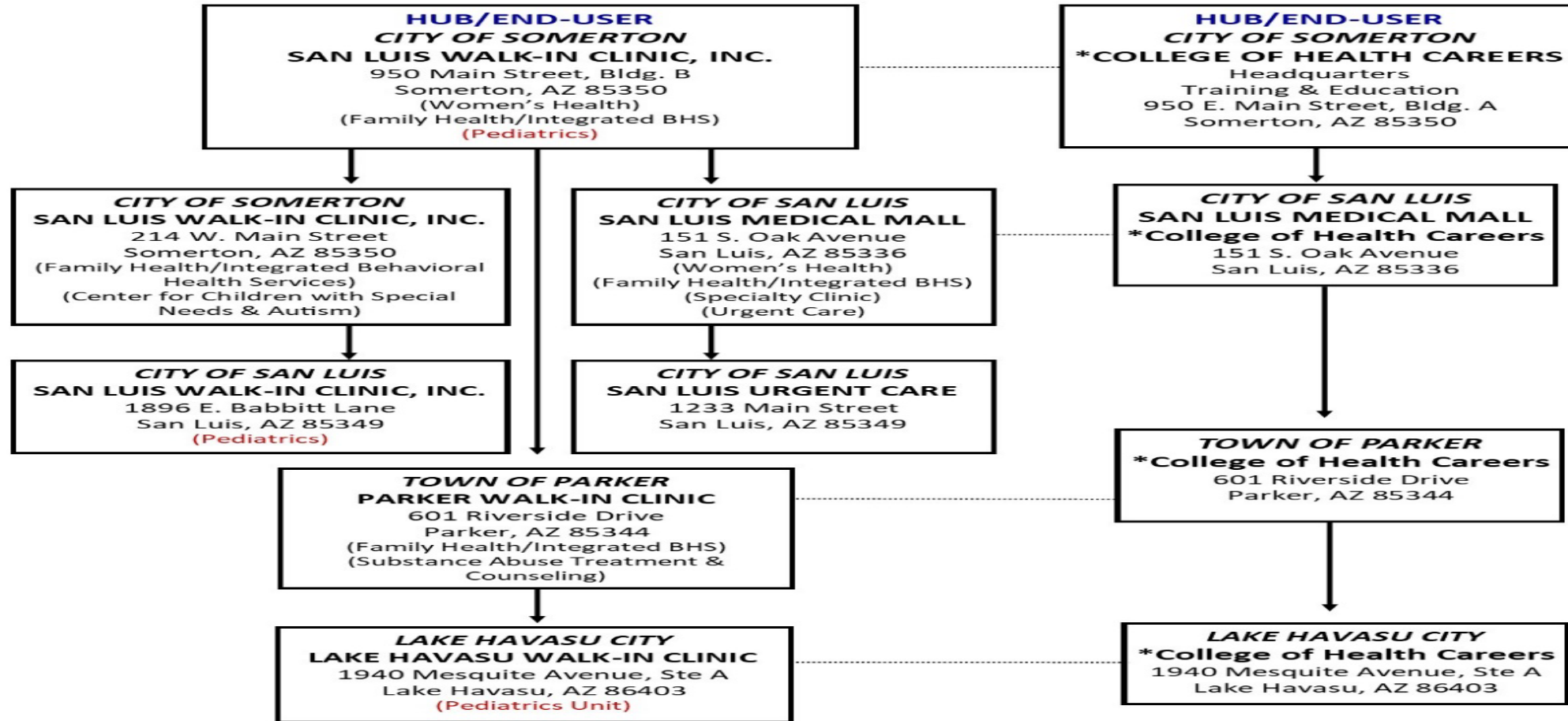
RCBH/SLWIC COVID-19 Impacting Target Communities:

COVID-19 Telehealth & Treatment and Allied Health Workforce Long Distance Training Development in rural and isolated COVID-19 Pandemic impacted communities in Western Arizona.

- **The Regional Center for Border Health, Inc. (501 c 3 organization) and its subsidiary San Luis Walk In Clinic, Inc. (SLWIC) non- for - profit organization a rural health integrated physical and mental health clinic, proposes the establishment of comprehensive integrated rural health primary and behavioral health clinic telehealth services for those individuals in need of being quarantine, isolation and be treated for COVID-19. As well to provide primary care and behavioral health telehealth consultation support services to schools by establishing a School -Based Telehealth Services Program in targeted distressed communities and impacted by COVID-19.**



RCBH/SLWIC Western Arizona Rural Telecommunication Infrastructure Network



*Colocation RHC—College of Health Careers Sites



School-based Telemedicine Program

A Study Pilot Project Funded by the Kellogg's Foundation

Targeted communities of:

- ❖ Ehrenbergh, La Paz County
- ❖ Lake Havasu, Mohave County



FEMA

U.S. Customs and Border Protection

HUMANITARIAN RESPONSE: REFUGEES TESTING



THANK YOU!

Ms. Amanda Aguirre

President & CEO

amanda@rcfbh.org

928-315-7910

www.rcfbh.org

