

# AI in the Department of Psychiatry: Innovations, Efforts, and Lessons

Stoddard J

Associate Professor

Departments of Psychiatry (Primary) and Biomedical Informatics

Neuroscience Graduate Program

8.17.23



# Thank you!

## CHCO/ CU Anschutz SOM

Jodi Zik, MD  
Sam Paskewitz, PhD  
Anne Penner, MD  
Josh Gowin, PhD  
Jarrod Ellingson, PhD  
Sarah Kennedy, PhD  
Emily Stoddard, LCSW  
Tara Trujillo, MD  
Ted Doykos, PhD  
Lauren Wood, PhD  
Jessica Hawks, PhD  
Jami Moe-Hartman, LPC  
Andrew Novick, MD, PhD  
Allison Dempsey, PhD &  
Jay Shore, MD

### Funding:

- CHCO Foundation
- ABNexus
- Colorado Office of Economic Development
- Brain and Behavior Research Foundation

## UC Boulder

Matt Jones, PhD



## NIH Shout Out!

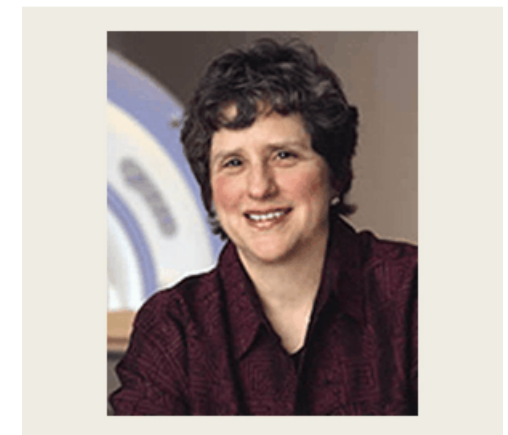
Simone Haller, PhD



## NIMH/Yale/UCSD/Tel-Aviv/ UCL, Bristol

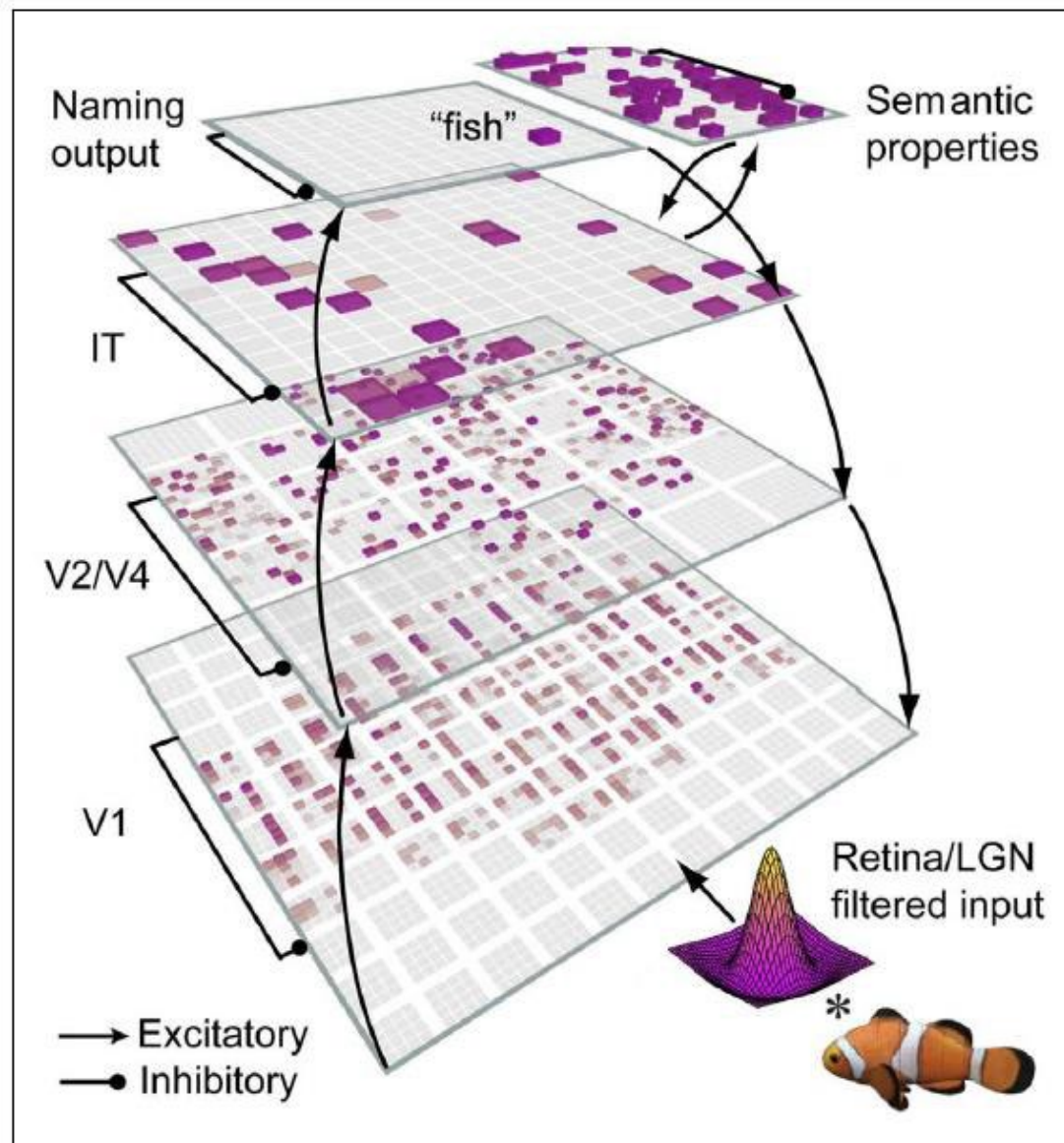
Melissa Brotman, PhD  
Lana Grasser, PhD  
Ellen Leibenluft, MD  
Danny Pine, MD  
Wan-Ling Tseng, PhD  
Guido Frank, MD  
Argyris Stringaris, MD, PhD  
Marcus Munafo, PhD  
Ian Penton-Voak, PhD  
Yair Bar-Haim, PhD  
Reut Naim, PhD

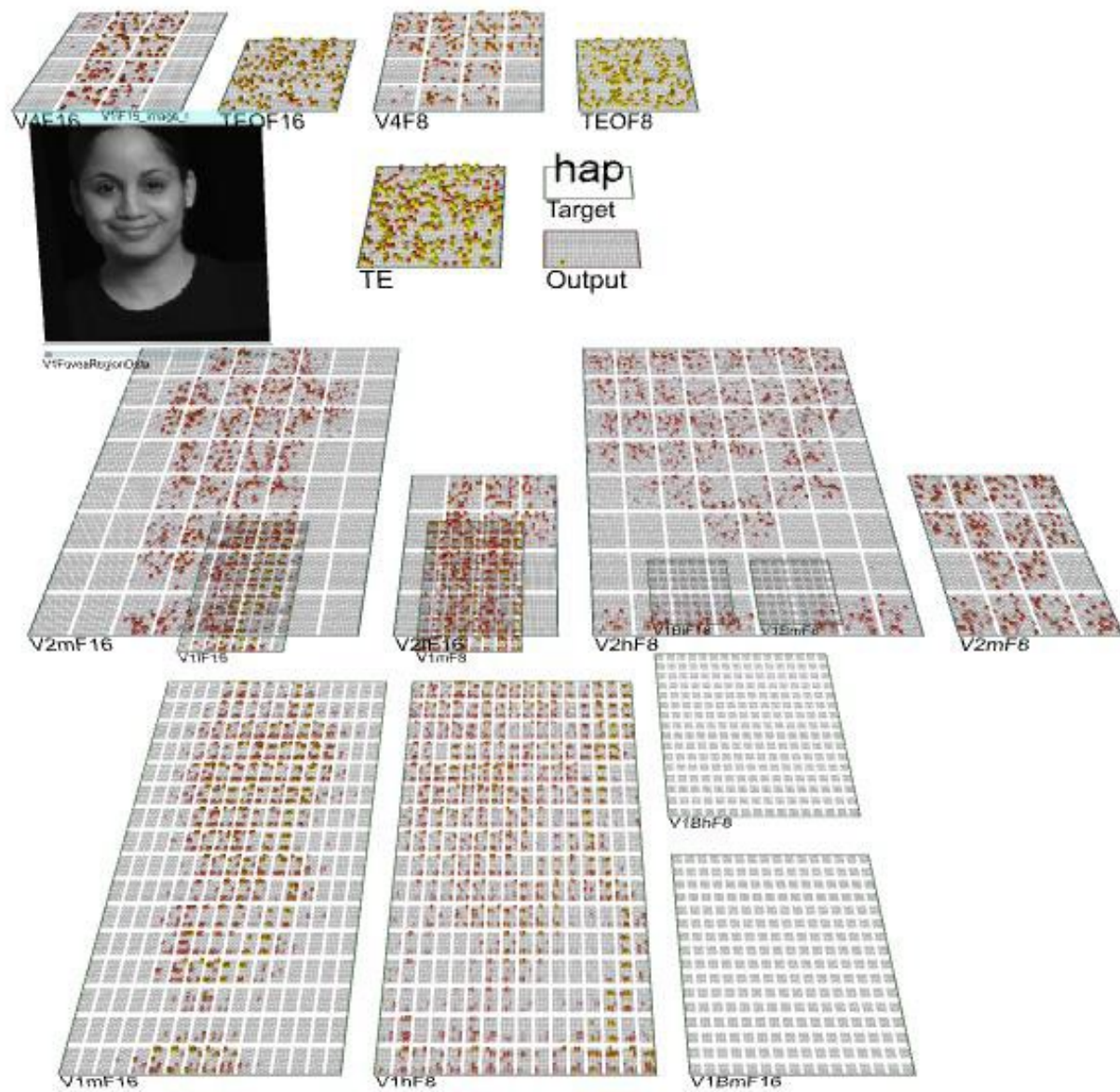
- NIMH K23MH113731
- NIMH R21MH120741
- NIMH R01MH103436

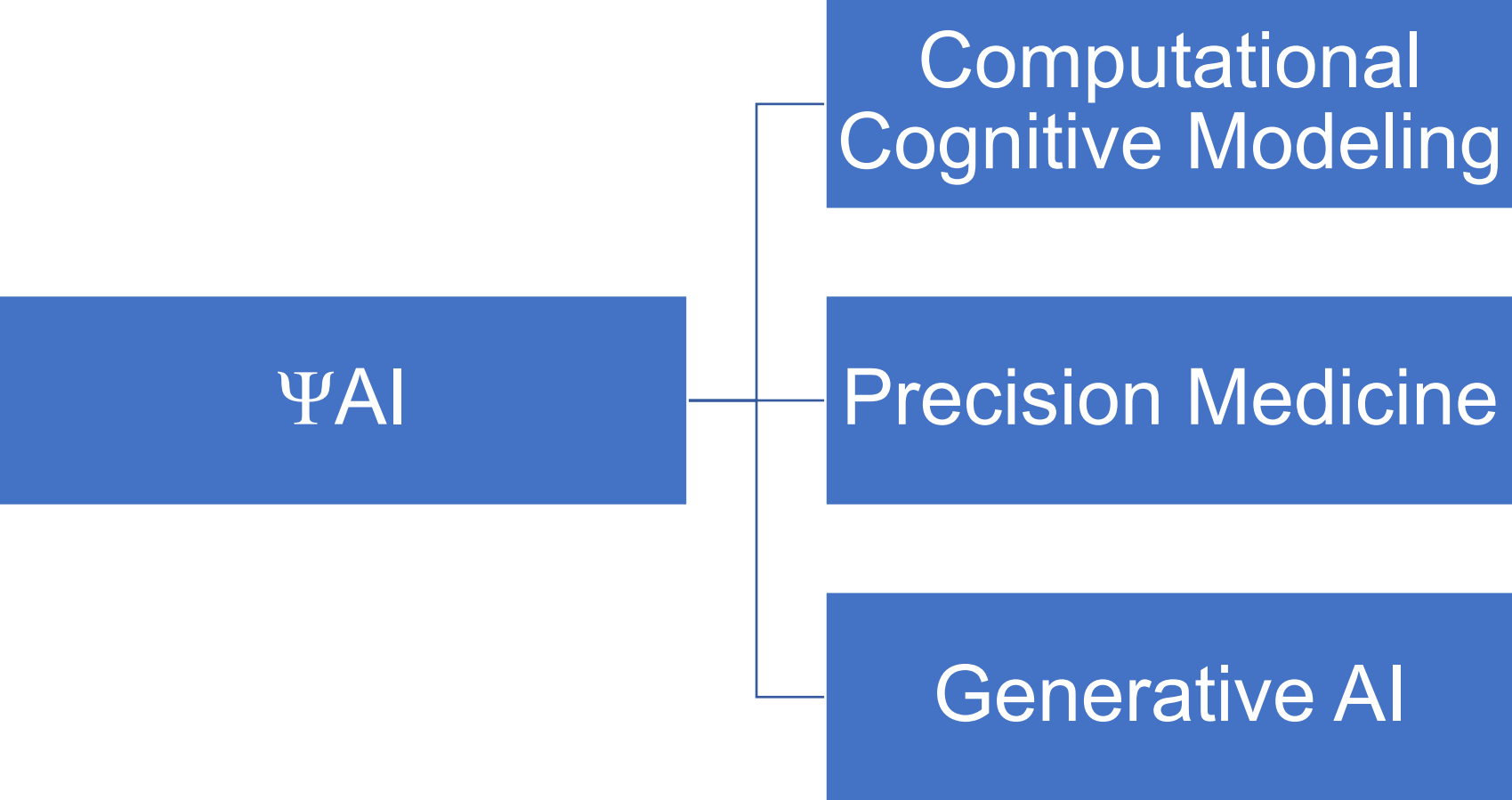


Collab pics in our task.

# AI – Computers and Cognition



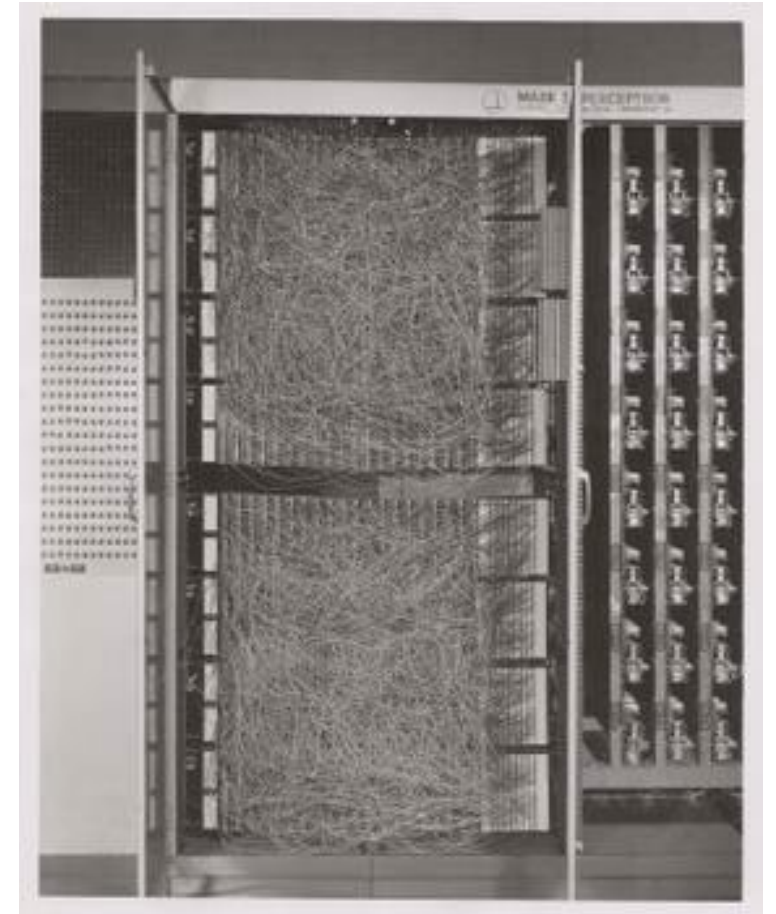




$\Psi$ AI

# Computational Cognitive Modeling

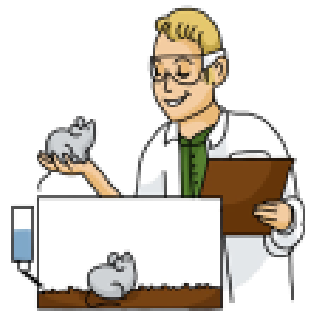
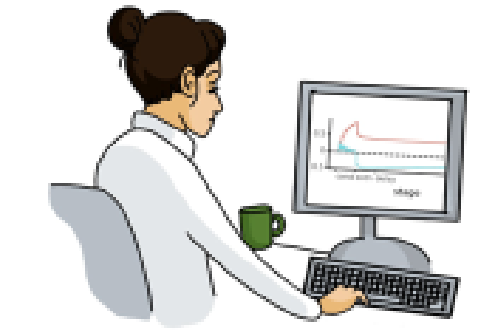
- Simulates or replicates neural function or cognitive processes
- Can teach us about function and processes
- Can be translated to measure these processes



Perceptron, Source: Wikipedia

McCulloch & Pitts, 1943

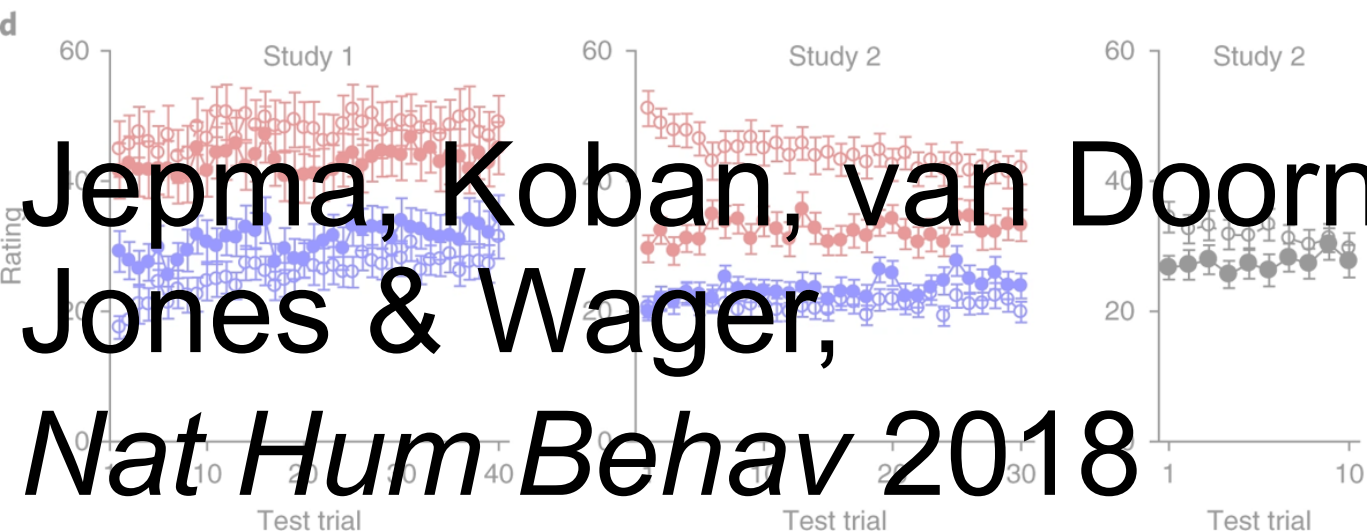
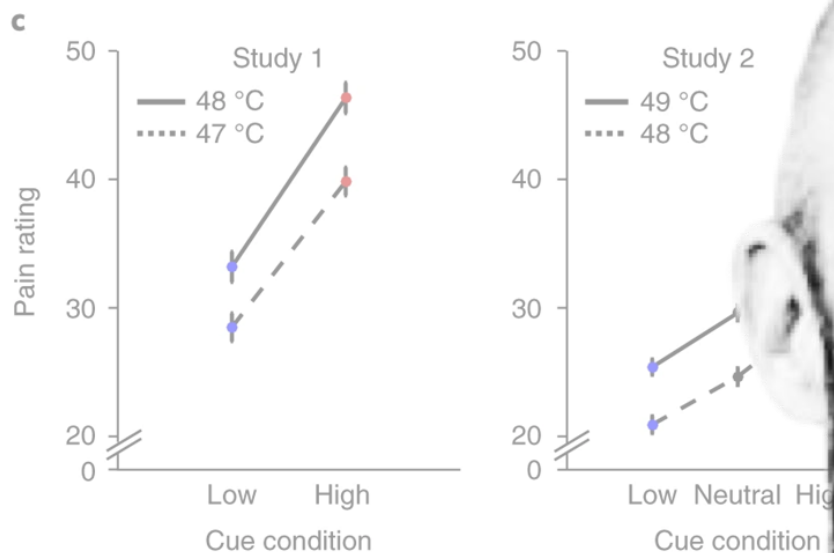
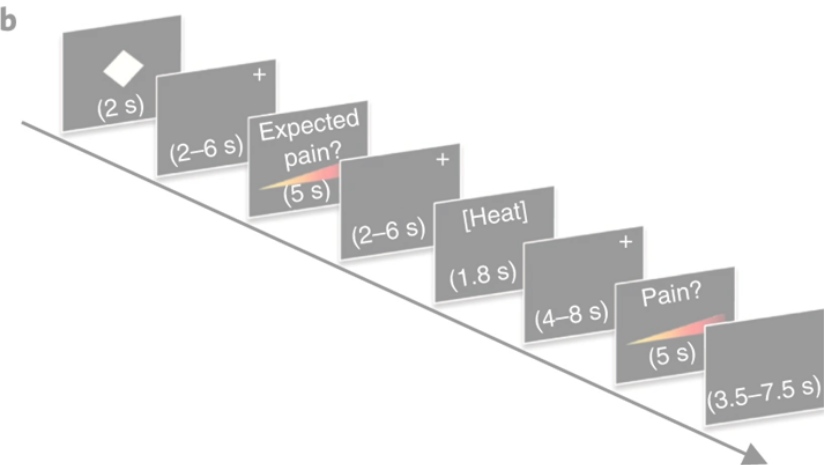
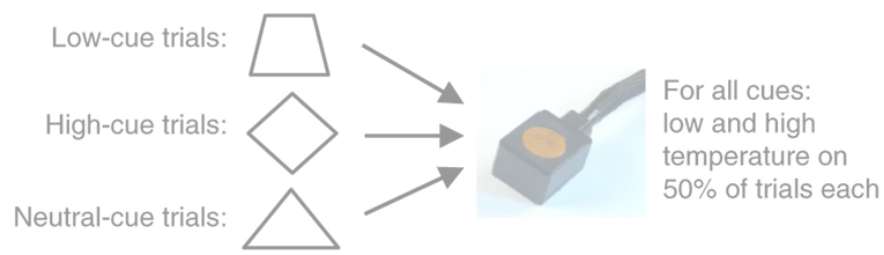
Rosenblatt, 1958



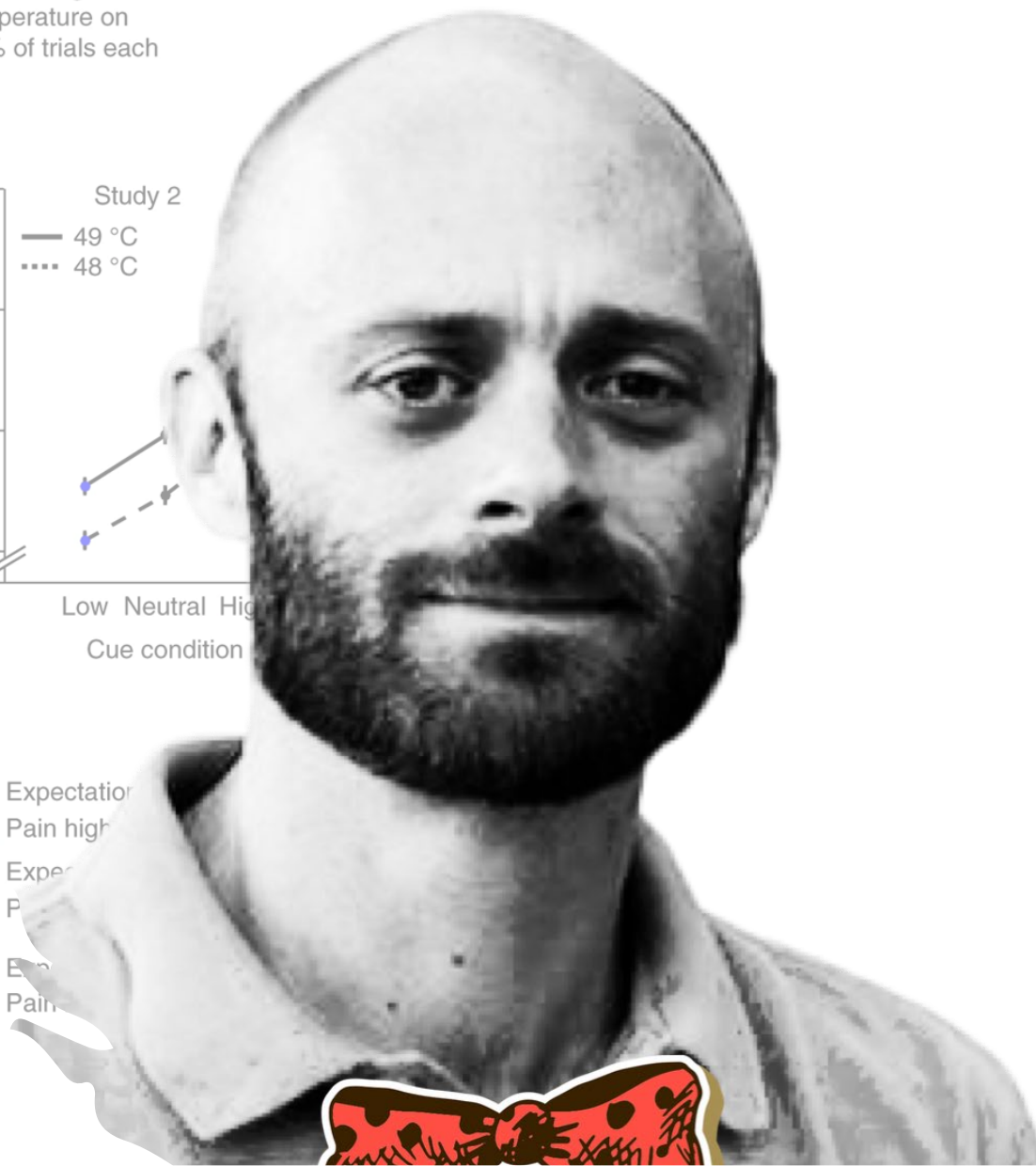
Phase 1: Expectation induction



Phase 2: Test

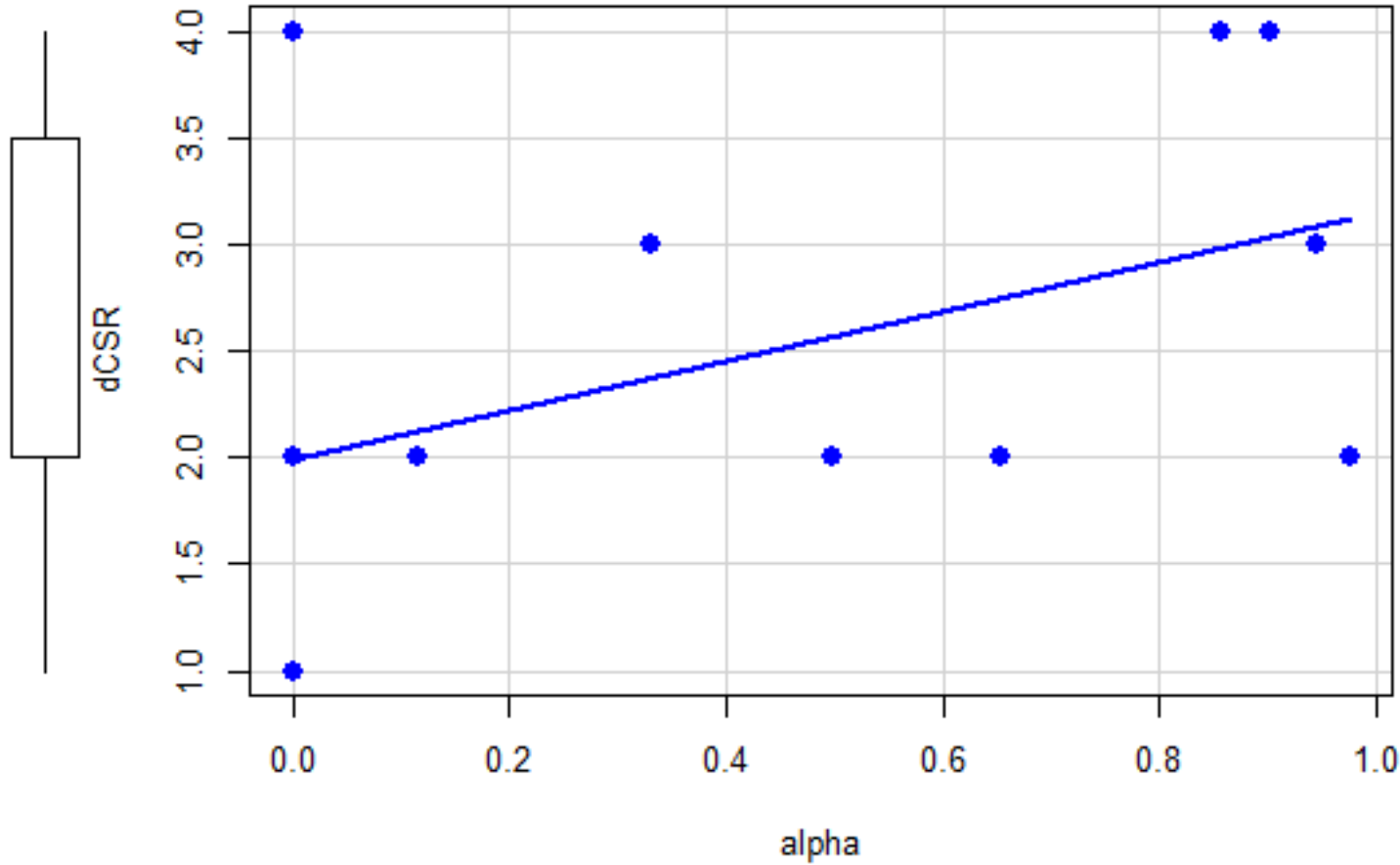


Jepma, Koban, van Doorn,  
 Jones & Wager,  
*Nat Hum Behav* 2018





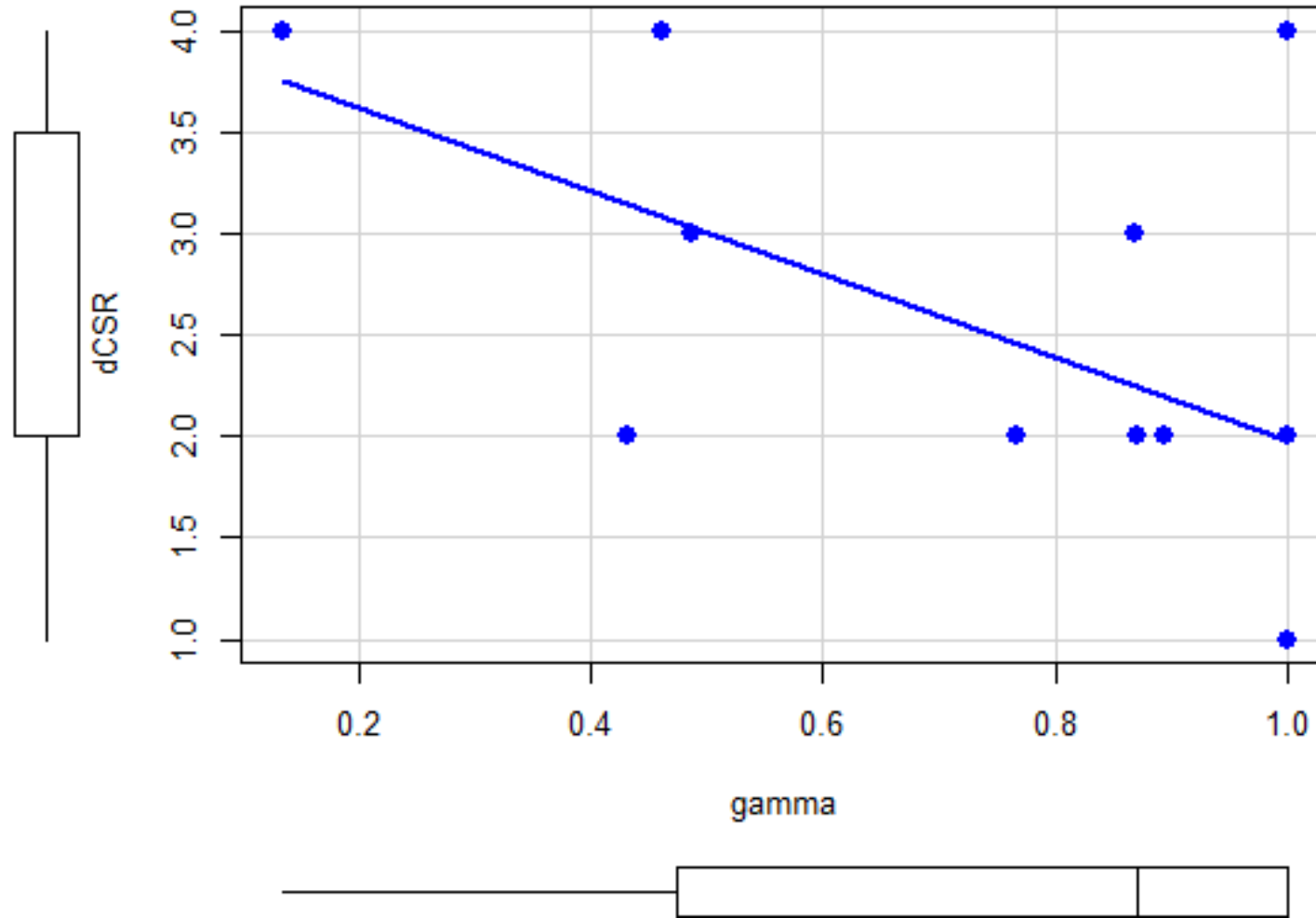
Change in clinical severity rating for social anxiety.  
Greater numbers mean greater improvement.



Learning Rate During Exposure Therapy

$r(10)=0.45, p=0.08$  (one sided)

Change in clinical severity rating for social anxiety.  
Greater numbers mean greater improvement.



Degree to which SUDS is influenced by that day's expectations.

$r(10)=-0.55, p=0.03, \text{ one sided}$

$\Psi$ AI

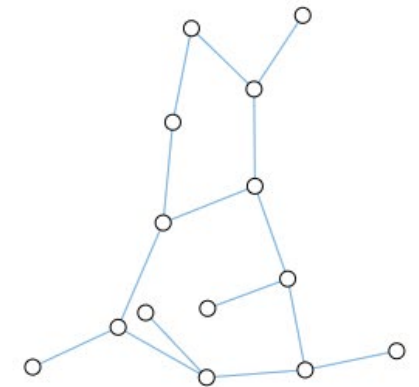
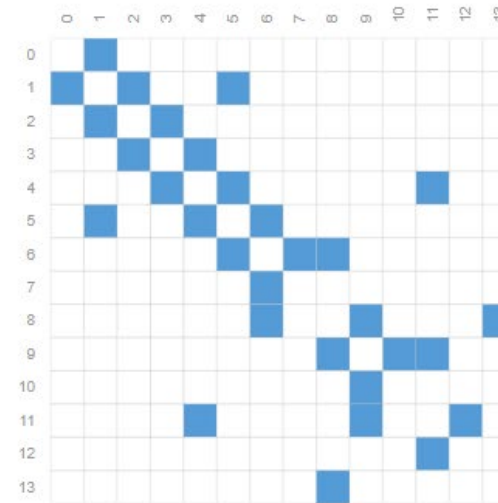
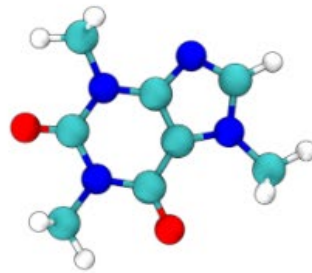
## Computational Cognitive Modeling

- Simulates or replicates neural function or cognitive processes
- Can teach us about function and processes
- Can be translated to measure these processes
  
- In the DOP we've used these for
  - Emotional learning
  - Social function
  - Choice behavior
  - Motivation and substance use prediction

$\Psi$ AI

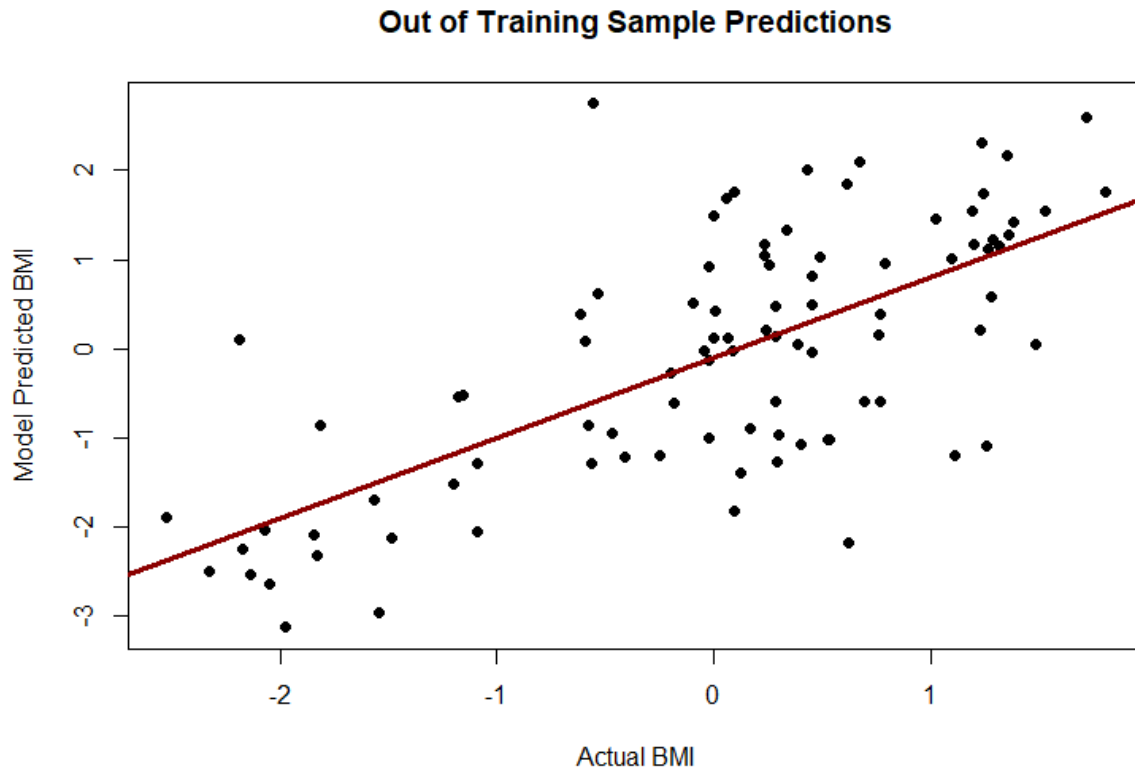
# Precision Medicine

- Not necessarily biologically realistic
- Pattern detection and data reduction
- Can be translated to identify risks and predict outcomes



# Predicting Discharge BMI Adolescents with Anorexia, BMI<18.5

Total N=368,  
train n=276, test n=92

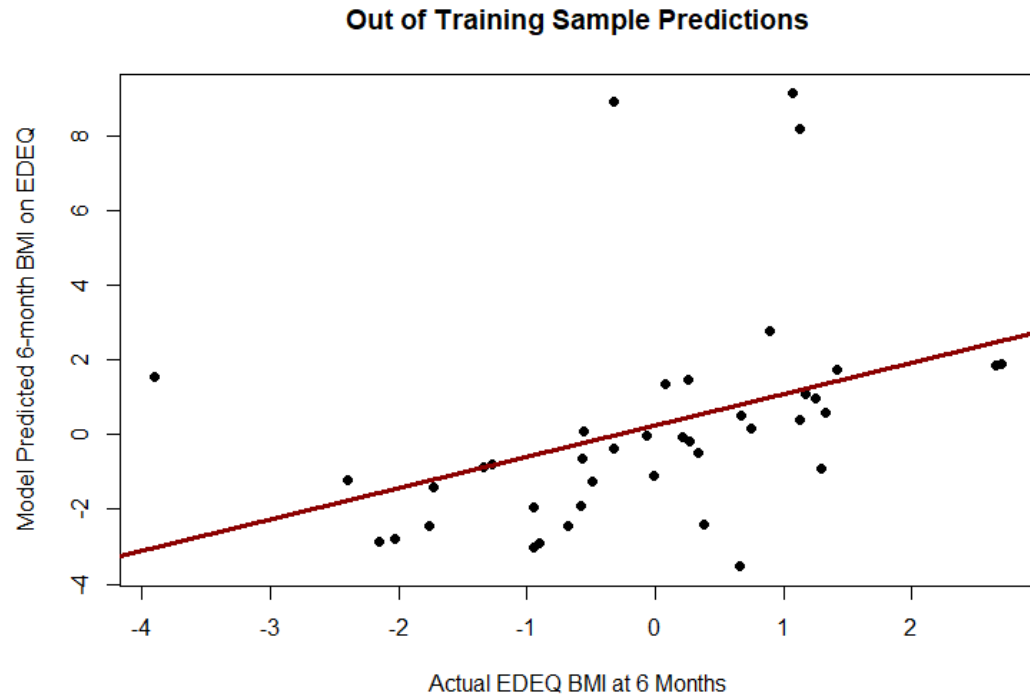


	overall	rf	svmRadial	glmnet
LOS	25.96	38.78	29.69	0.40
reason_dcProper	13.46	11.90	0.00	28.76
Co_Psychotic1	6.09	0.07	0.00	22.16
reason_dcHLOC	5.49	2.49	0.00	15.80
reason_dc	3.52	0.00	13.72	0.00

- Ensemble model explains 51.2% variance in training set (N=276)
- Markedly predicts out of sample BMI (r=0.69, N=92, p=0)

# Predicting Self Reported BMI 6 Months after Discharge Adolescents with Anorexia, BMI<18.5

Total N=160,  
train n=120, test n=40



	overall	rf	svmRadial	glmnet
BMI_DCr	26.00	40.50	9.76	27.85
race_COMBINED				
2	14.74	0.11	0.00	18.29
referral_srcNoTx	12.14	0.17	0.00	15.07
bisbas11	11.22	2.70	2.40	13.33
bisbas2	7.20	0.28	1.25	8.70
ders22	6.28	0.57	2.56	7.32
ders31	2.89	0.69	1.24	3.32

- Ensemble model explains 35.9% variance in training set (N=120)
- Solidly predicts out of sample BMI (r=0.39, N=40, p=0.01)

ΨAI

# Precision Medicine

- Not necessarily biologically realistic
- Pattern detection and data reduction
- Can be translated to identify risks and predict outcomes
  
- At the DOP we've been using these for:
  - Decompensation prediction (HealthRhythms)
  - Treatment response for eating disorders
  - Outburst prediction in ASD (Romani)
  - Suicidality prediction in adolescence (CereHealth)
  - Mood episode emergence in adolescence (CereHealth)
  - Substance use emergence throughout the lifespan



givechildrensco  
Sponsored



# 215%

increase in suicide attempts  
and ideation seen in Children's  
Hospital Colorado Emergency  
Department from 2018 to 2021.

♥ Give Now

Donate Now



5 likes



ΨAI

# Generative Models

- Outputs most probable response based on learned data
- Synthesize a large body of data to output context dependent answers
- In the DOP, truly generative AI work is pending; though rules-based algorithms mimicking generative AI are being explored!



Therapist kitty,  
Source: Bing Image Creator/DALL-E



