

ARIZONA  
TELEMEDICINE  
PROGRAM



## Distance Education by Telemedicine

Tracy Skinner

Education and Training Coordinator  
Arizona Telemedicine Program

© 2017 ARIZONA TELEMEDICINE PROGRAM

## CE Requirements

- MD 20 per year (AZ)
- PA 50 every 2 years (AZ)
- RN 15-30 every 2 years
- NP 30 every 2 years
- EMS 60 per 2 years
- DO 20-50 per year



© 2017 ARIZONA TELEMEDICINE PROGRAM





# Participant Diversity

- |                       |                      |                      |
|-----------------------|----------------------|----------------------|
| MD                    | DO                   | PA-C                 |
| Promotora             | PhD                  | Nursing              |
| Technology            | Education & Training | DDS                  |
| EMS, Fire, Safety     | Clinical Staff       | Medical Student      |
| Respiratory Therapist | RPH/PharmD           | Physical Therapist   |
| Behavioral Health     | Radiology Technician | Administrative Staff |
| Registered Dietitian  | Social Worker        |                      |



© 2017 ARIZONA TELEMEDICINE PROGRAM



# Continuing Education Schedule



	Monday	Tuesday	Wednesday	Thursday	Friday
Week 1			Surgery Medicine Psychiatry	Pediatrics	
Week 2		Nursing	Surgery Medicine Psychiatry		
Week 3			Surgery Medicine Psychiatry		Advances in Aging
Week 4	ObGyn		Surgery Medicine Psychiatry	Pediatrics	



© 2017 ARIZONA TELEMEDICINE PROGRAM





Topics:

- common medical conditions
- treatment options
- psychosocial issues
- safety issues
- nutrition

Effective treatment for older adults differs greatly from that for younger adults. These rounds provide vital information to those health care providers treating this growing population.



© 2017 ARIZONA TELEMEDICINE PROGRAM



The latest in the diagnosis/treatment of various medical disorders.

© 2017 ARIZONA TELEMEDICINE PROGRAM



Banner University Medical Center  
Tucson

# Nursing Grand Rounds



Provide state-of-the art and research information on current practice topics

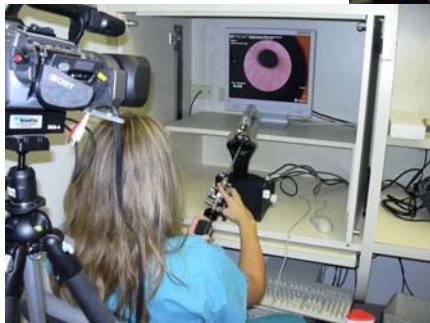


© 2017 ARIZONA TELEMEDICINE PROGRAM



Banner University Medical Center  
Phoenix

## OBGYN



Clinically relevant information to support providers in the provision of women's care.



© 2017 ARIZONA TELEMEDICINE PROGRAM






**THE UNIVERSITY OF ARIZONA  
COLLEGE OF MEDICINE TUCSON**  
**Pediatrics**

Care of the pre-term baby, pediatric advanced life support and emergency care among others.

© 2017 ARIZONA TELEMEDICINE PROGRAM



**THE UNIVERSITY OF ARIZONA  
COLLEGE OF MEDICINE TUCSON**  
**Psychiatry**

Provide mental health professionals with updates on the latest in psychiatric care

ARIZONA TELEMEDICINE PROGRAM

© 2017 ARIZONA TELEMEDICINE PROGRAM

SOUTHWEST TELEHEALTH RESOURCE CENTER TRC



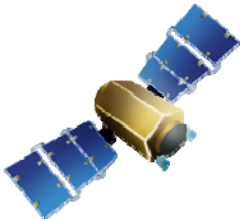


THE UNIVERSITY OF ARIZONA  
COLLEGE OF MEDICINE TUCSON

Surgery

Identify new clinical and scientific information related to surgery

© 2017 ARIZONA TELEMEDICINE PROGRAM



## Satellite Broadcast Resource

- American Cancer Society [www.cancer.org](http://www.cancer.org)
- American Diabetes Association [www.diabetes.org](http://www.diabetes.org)
- American Heart Association [www.americanheart.org](http://www.americanheart.org)
- Centers for Disease Control [www.cdc.gov](http://www.cdc.gov)



<http://calendar.aztel.arizona.edu/cme>

<p><b>17</b></p> <p>7:30 a.m. - 8 a.m.  <b>Satellite Test Time: WRSU, SMH, SAMC</b></p> <p><b>Satellite Programming</b>              8 a.m. - 12 p.m.  <b>Cultural Aspects of Death and Dying Speaker: Cheryl Mallernee McGaffic, PhD, RN, CCRN</b></p> <p>12 p.m. - 12:30 p.m.  <b>SGR Test Time: SAMC, WRSU, PRMC, MCHC</b></p> <p><b>Surgery Grand Rounds</b>              12:30 p.m. - 1:30 p.m.</p>	<p><b>18</b></p> <p>10:45 a.m. - 11:15 a.m.  <b>Cardio Test Time: TCIMC, ADCPX, ASPCEYM, ASPCDOU, ASPCFLO, ASPCYUM, SAMC</b></p> <p>10:45 a.m. - 11:15 a.m.  <b>Cardio Test Time: TCIMC, SMG</b></p> <p><b>Cardiology Grand Rounds</b>              11:15 a.m. - 12:15 p.m.</p> <p>11:15 a.m. - 12:15 p.m.  <b>Cardiology Lecture Series (IHS Sites Only)</b></p>	<p><b>19</b></p> <p>11:30 a.m. - 12 p.m.  <b>MGR Test Time: ADCPX, ASPCEYM, ASPCFLO, ASPCYUM, ASPCDOU, SAMC, WRSU, PRMC</b></p> <p><b>Medicine Grand Rounds</b>              12 p.m. - 1 p.m.  <b>Clinicopathological Conference</b></p> <p>3:30 p.m. - 4 p.m.  <b>Psych GR - Test Time - NARBHA, SAMC, TCIMC</b></p> <p><b>Psychiatry Grand Rounds</b>              4 p.m. - 5:30 p.m.</p>	<p><b>20</b></p> <p>11:30 a.m. - 12 p.m.  <b>PHGR Test Time:</b></p> <p><b>Public Health Grand Rounds</b>              12 p.m. - 1 p.m.</p>	<p><b>21</b></p>
<p><b>24</b></p> <p>11:30 a.m. - 12 p.m.  <b>SGR Test Time: SAMC, WRSU, PRMC, MCHC</b></p> <p><b>Surgery Grand Rounds</b>              12 p.m. - 1 p.m.</p>	<p><b>25</b></p>	<p><b>26</b></p> <p>12 p.m. - 12:30 p.m.  <b>Peds GR Test Time:</b></p> <p><b>Pediatric Grand Rounds</b>              12:30 p.m. - 1:30 p.m.</p>	<p><b>27</b></p> <p>11:30 a.m. - 12 p.m.  <b>MGR Test Time: ADCPX, ASPCEYM, ASPCFLO, ASPCYUM, ASPCDOU, SAMC, WRSU, PRMC</b></p>	<p><b>28</b></p>

*biomedical*  
**COMMUNICATIONS** | <http://streaming.biocom.arizona.edu/home/>

The University of Arizona Health Sciences  
**Video Streaming**

Archived Programs | Teleconference Calendar

August 2007 | September 2007

S	M	T	W	T	F	S
		1	2	3	4	
5	6	7	8	9	10	11
12	13	14	15	16	17	18
19	20	21	22	23	24	25
26	27	28	29	30	31	

**Live Events**  
 No events are streaming live right now.

The next live event is CBIO Seminar Series which will begin streaming in 38 minutes at 9:00 AM.

**Recent Events**

**From Friday...**

- End of Life Nursing Consortium
- Neurology Grand Rounds

**From Wednesday...**

- Medicine Grand Rounds
- CPC Seminar
- Surgery Grand Rounds

**Archives**

- The University of Arizona College of Medicine
- The University of Arizona College of Nursing
- The University of Arizona College of Pharmacy
- Mel & Enid Zuckerman College of Public Health
- Centers of Excellence
- Arizona Telemedicine Program
- University Medical Center

**Coming Soon**

**27 AUG** CBIO Seminar Series  
 Growth, Senescence and Immortalization of Cultured Human Mammary Epithelial Cells  
 Marsha Stampfer, PhD

**28 AUG** Frontiers in Medical Research Seminars  
 Neural Basis for Emotion and Disease  
 Richard D. Lane, MD, PhD  
 Katalin M. Gothard, MD, PhD

**29 AUG** Surgery Grand Rounds  
 Arizona's

**Monday, August 27th**


9:00-10:00 AM  
**CBIO Seminar Series**  
 Growth, Senescence and Immortalization of Cultured Human Mammary Epithelial Cells  
 Marsha Stampfer, PhD

**Tuesday, August 28th**

12:00-1:00 PM  
**Frontiers in Medical Research Seminars**  
 Neural Basis for Emotion and Disease

**Search**

*biomedical*  
**COMMUNICATIONS**



The University of Arizona Health Sciences  
**Video Streaming**

[Archived Programs](#) | [Teleconference Calendar](#)

**Archives** [Block](#)

(Some archived events are not located on this site. You might find them in our old archives.)

**The University of Arizona College of Medicine**  
| College of Medicine Convocation | Events | Faculty Support | Grand Rounds | Miscellaneous | Pediatric Pulmonary Center | Research Support | Student Support |

**The University of Arizona College of Nursing**  
| Culturally Competent Care | End of Life Nursing Consortium | NURS 893 Symposium | NURS 779 Medicare Modernization Act & Rural Health Policy | Nursing Administration Research Conference (Fall) | Nursing Assembly | Nursing Cultural Wisdom Workshop | Nursing Grand Rounds | Nursing Lectures | Ph.D. Dissertation Defense | Research Seminars | U.S. - Mexico Border Health Issues |

**The University of Arizona College of Pharmacy**  
| College of Pharmacy Events | Lectures | Miscellaneous |

**Mel & Enid Zuckerman College of Public Health**  
| Arizona Center for Public Health Preparedness | Arizona Clinical Research Training Program | Making Professional Presentations | Public Health Seminars | Rural Health Office Programs | Winter Graduation |

**Centers of Excellence**  
| Arizona Arthritis Center | Arizona Cancer Center | Arizona Center on Aging | Valley Fever Center for Excellence | Women's Health |

**Arizona Telemedicine Program**

**https://distance.telemedicine.arizona.edu/default.aspx**



**Arizona Telemedicine Program Distance Education Site**

Please select the link to download a desired document. You will need Acrobat Reader to view and print these files.

Click [here](#) to download Acrobat Reader.

**ATP Clinical Care Conference Series Grand Rounds**  
[Clinical Care Eval Form](#)  
[Clinical Care Sign In Form](#)

**ATP Informatics Grand Rounds**  
[Informatics Eval Form](#)  
[Informatics Sign In Form](#)

**ATP Native American Cardiology Grand Rounds**  
[Cardiology Eval Form](#)  
[Cardiology Sign In Form](#)

**Geriatrics Grand Rounds**

**Automated  
Soon!**

**ATP Links**

[Distance Education Calendar](#)

[Video Streaming](#)

[ATP Homepage](#)



## Evaluations Results

(Agree – disagree scale)	(n = 11896% agree)
Relevant to practice:	85% agree
Got new info:	95% agree
Teaching tech. conducive:	93% agree
Objectives met:	93% agree
Company/product bias:	85% disagree
Not able attend without ATP:	95% agree



© 2017 ARIZONA TELEMEDICINE PROGRAM



## Administrative Events



[Select Calendar\(s\)](#)      [Jump to Today](#)      [Select Date](#)

---

## Arizona Telemedicine Program Administrative Event Calendar

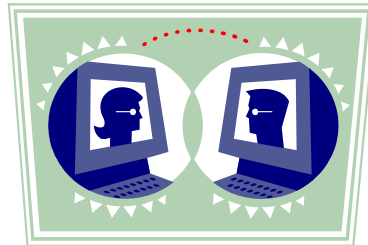
---

[< Previous](#)      **April 2003**      [Next >](#)

Sun	Mon	Tue	Wed	Thu	Fri	Sat
<a href="#">30</a>	<a href="#">31</a>	<a href="#">1</a>	<a href="#">2</a>	<a href="#">3</a>	<a href="#">4</a>	<a href="#">5</a>
	07:00 - 08:30 <a href="#">Therapeutics Mtg 2920/IP-SHC SK</a>  08:30 - 09:30 <a href="#">Review of New Molecules 3230/IP-SHC</a>  15:00 - 16:30 <a href="#">Med/Surg 896K 3230/PHX</a>  16:30 - 20:00 <a href="#">HSA 560 Schneller 3230/PHX/Gile</a>	07:30 - 09:00 <a href="#">Supportive Care Mtg. Kiewit/IP-SHC</a>  14:30 - 16:30 <a href="#">Neurology Problem Solving 3230/PHX</a>  18:00 - 20:00 <a href="#">Frankenstein Community Lecture Series DuVal/PHX</a>	08:30 - 10:00 <a href="#">Cancer Prevention Grand Rounds Kietwit/IP-SHC/cable</a>  09:30 - 11:30 <a href="#">Quality Assurance for CRS providers: ADHSCAT, 3230_FMC (Children Rehab Serv rm)</a>  11:30 - 14:15 <a href="#">N602: ACD Faculty Role: Reed 3230/PHX</a>  16:00 - 18:00	08:30 - 09:50 <a href="#">N696F 3230/PHX Tsang</a>  09:50 - 12:50 <a href="#">N706 3230/Phx Koothan</a>  13:00 - 15:50 <a href="#">N731 3230/Phx Glittenberg</a>	07:30 - 09:00 <a href="#">Neurosurgery Grand Rounds 5403/TVCTR/Stream</a>  07:30 - 14:00 <a href="#">MPH Internship Conference 3230/PHX</a>  09:30 - 11:00 <a href="#">WSC - Ensenada Tandberg Presentation</a>  14:30 - 17:00 <a href="#">Board of Medical Loans 3230/Phx</a>	

## Types of Administrative Events

- Bioterrorism Task Force
- Statewide or Country Roundtables
  - Fires
  - West Nile Virus
  - Diabetes
- Special Interest
  - IHS
  - ADHS
  - CRS (HRSA)



**Administrative Event Request Form**

Date: \_\_\_\_\_ Coordinator requesting conference: \_\_\_\_\_

Company Name: \_\_\_\_\_

Location of videoconferencing equipment (address and room): \_\_\_\_\_

E-mail address: \_\_\_\_\_ Phone number: \_\_\_\_\_

Are you a member of the ATP network? Yes No

If not, do you have ISDN capabilities? Yes No

Potential Conference Date(s) - Please list 3 potential dates:

1) \_\_\_\_\_ 2) \_\_\_\_\_ 3) \_\_\_\_\_

Start time: \_\_\_\_\_ End Time \_\_\_\_\_

Are there any connection or long distance fees required? Yes No



© 2017 ARIZONA TELEMEDICINE PROGRAM



**Participating Site Information**

Site #1

Name of receiving site: \_\_\_\_\_

Address of receiving site: \_\_\_\_\_

Are they members of the Arizona Telemedicine Program Network? Yes No

If not, what connection capabilities do they have? \_\_\_\_\_

Receiving site contact person: \_\_\_\_\_

Receiving site's contact person phone number: \_\_\_\_\_

Receiving site's contact person e-mail address: \_\_\_\_\_

Comments: \_\_\_\_\_



© 2017 ARIZONA TELEMEDICINE PROGRAM



## Video Conference Rules



1. Always assume that your microphone is on
2. Always assume that someone can see you



## Barriers

- Time zone differences
- Room size
- Reduced travel





## Benefits

- Cost savings (travel / registration fees)
- Reduced time away from work
- Wider variety of opportunities
- Convenience



© 2017 ARIZONA TELEMEDICINE PROGRAM



ARIZONA  
TELEMEDICINE  
PROGRAM



Thank you!

[tskinner@telemedicine.arizona.edu](mailto:tskinner@telemedicine.arizona.edu)

© 2017 ARIZONA TELEMEDICINE PROGRAM