

ARIZONA  
TELEMEDICINE  
PROGRAM



SOUTHWEST  
**TRC**  
TELEHEALTH  
RESOURCE CENTER™

## Distance Education by Telemedicine



Janet Major  
Associate Director for Facilities  
Arizona Telemedicine Program

© 2018 ARIZONA TELEMEDICINE PROGRAM

## CME/CE Requirements

- |       |                       |
|-------|-----------------------|
| • MD  | 20 per year (AZ)      |
| • PA  | 50 every 2 years (AZ) |
| • RN  | 15-30 every 2 years   |
| • NP  | 30 every 2 years      |
| • EMS | 60 per 2 years        |
| • DO  | 20-50 per year        |



ARIZONA  
TELEMEDICINE  
PROGRAM

© 2018 ARIZONA TELEMEDICINE PROGRAM

SOUTHWEST  
**TRC**  
TELEHEALTH  
RESOURCE CENTER™



## Participant Diversity in ATP Educational Programs

MD	DO	PA-C
Promotora	PhD	Nursing
Technology	Education & Training	DDS
EMS, Fire, Safety	Clinical Staff	Medical Student
Respiratory Therapist	RPH/PharmD	Physical Therapist
Behavioral Health	Radiology Technician	Administrative Staff
Registered Dietitian	Social Worker	



© 2018 ARIZONA TELEMEDICINE PROGRAM



## Continuing Education Schedule



	Monday	Tuesday	Wednesday	Thursday	Friday
Week 1			Surgery Medicine Psychiatry	Pediatrics	
Week 2		Nursing	Surgery Medicine Psychiatry		
Week 3			Surgery Medicine Psychiatry		Advances in Aging
Week 4	ObGyn		Surgery Medicine Psychiatry	Pediatrics	



© 2018 ARIZONA TELEMEDICINE PROGRAM





#### Topics:

- common medical conditions
- treatment options
- psychosocial issues
- safety issues
- nutrition

Effective treatment for older adults differs greatly from that for younger adults. These rounds provide vital information to those health care providers treating this growing population.



© 2018 ARIZONA TELEMEDICINE PROGRAM



The latest in the diagnosis/treatment of various medical disorders.

© 2018 ARIZONA TELEMEDICINE PROGRAM



Banner  
University Medical Center  
Tucson

# Nursing Grand Rounds



Provide state-of-the art and research information on current practice topics



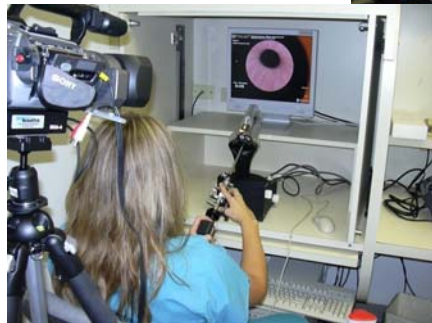
© 2018 ARIZONA TELEMEDICINE PROGRAM



Banner  
University Medical Center  
Phoenix



## OBGYN



Clinically relevant information to support providers in the provision of women's care.



© 2018 ARIZONA TELEMEDICINE PROGRAM



THE UNIVERSITY OF ARIZONA  
COLLEGE OF MEDICINE TUCSON

## Pediatrics

Care of the pre-term baby,  
pediatric advanced life  
support and emergency  
care among others.

© 2018 ARIZONA TELEMEDICINE PROGRAM

THE UNIVERSITY OF ARIZONA  
COLLEGE OF MEDICINE TUCSON

## Psychiatry

Provide mental health professionals with updates on the latest in psychiatric care

© 2018 ARIZONA TELEMEDICINE PROGRAM



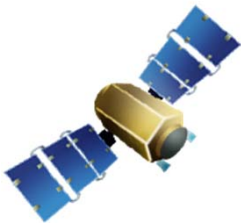


THE UNIVERSITY OF ARIZONA  
COLLEGE OF MEDICINE TUCSON

Surgery

Identify new clinical and scientific  
information related to surgery

© 2018 ARIZONA TELEMEDICINE PROGRAM



## Satellite Broadcast Resource

- American Cancer Society [www.cancer.org](http://www.cancer.org)
- American Diabetes Association [www.diabetes.org](http://www.diabetes.org)
- American Heart Association [www.americanheart.org](http://www.americanheart.org)
- Centers for Disease Control [www.cdc.gov](http://www.cdc.gov)



© 2018 ARIZONA TELEMEDICINE PROGRAM



<http://calendar.aztel.arizona.edu/cme>

<u>17</u>	<u>18</u>	<u>19</u>	<u>20</u>	<u>21</u>
<p>7:30 a.m. - 8 a.m.  Satellite Test Time: WRSU, SMH, SAMC</p> <p> <b>Satellite Programming</b>  8 a.m. - 12 p.m.  Cultural Aspects of Death and Dying Speaker: Cheryl Mallernee McGaffie, PhD, RN, CCRN</p> <p>12 p.m. - 12:30 p.m.  SGR Test Time: SAMC, WRSU, PRMC, MCHC</p> <p> <b>Surgery Grand Rounds</b>  12:30 p.m. - 1:30 p.m.</p>	<p>10:45 a.m. - 11:15 a.m.  Cardio Test Time: TCIMC, ADCPX, ASPCEYM, ASPCDOU, ASPCFLO, ASPCYUM, SAMC</p> <p>10:45 a.m. - 11:15 a.m.  Cardio Test Time: TCIMC, SMG</p> <p> <b>Cardiology Grand Rounds</b>  11:15 a.m. - 12:15 p.m.</p> <p>11:15 a.m. - 12:15 p.m.  Cardiology Lecture Series (JHS Sites Only)</p>	<p>11:30 a.m. - 12 p.m.  MGR Test Time: ADCPX, ASPCEYM, ASPCFLO, ASPCYUM, ASPCDOU, SAMC, WRSU, PRMC</p> <p> <b>Medicine Grand Rounds</b>  12 p.m. - 1 p.m.  Clinicopathological Conference</p> <p>3:30 p.m. - 4 p.m.  Psych GR - Test Time - NARBHA, SAMC, TCIMC</p> <p> <b>Psychiatry Grand Rounds</b>  4 p.m. - 5:30 p.m.</p>	<p>11:30 a.m. - 12 p.m.  PHGR Test Time:</p> <p> <b>Public Health Grand Rounds</b>  12 p.m. - 1 p.m.</p>	
<u>24</u>	<u>25</u>	<u>26</u>	<u>27</u>	<u>28</u>
<p>11:30 a.m. - 12 p.m.  SGR Test Time: SAMC, WRSU, PRMC, MCHC</p> <p> <b>Surgery Grand Rounds</b>  12 p.m. - 1 p.m.</p>	<p>12 p.m. - 12:30 p.m.  Peds GR Test Time:</p> <p> <b>Pediatric Grand Rounds</b>  12:30 p.m. - 1:30 p.m.</p>	<p>11:30 a.m. - 12 p.m.  MGR Test Time: ADCPX, ASPCEYM, ASPCFLO, ASPCYUM, ASPCDOU, SAMC, WRSU, PRMC</p> <p> <b>Medicine Grand Rounds</b></p>		

**biomedical COMMUNICATIONS** <http://streaming.biocom.arizona.edu/home/>

The University of Arizona Health Sciences  
**Video Streaming**

Archived Programs | Teleconference Calendar

August 2007 | September 2007

**Monday, August 27th**

9:00-10:00 AM CBIO Seminar Series  
Growth, Senescence and Immortalization of Cultured Human Mammary Epithelial Cells  
Martha Stampfer, PhD

**Tuesday, August 28th**

12:00-1:00 PM Frontiers in Medical Research Seminars  
Neural Basis for Emotion and Disease

**Live Events**  
No events are streaming live right now.

The next live event is CBIO Seminar Series which will begin streaming in 38 minutes at 9:00 AM.

**Recent Events**

From Friday...  
End of Life Nursing Consortium  
Neurology Grand Rounds

From Wednesday...  
Medicine Grand Rounds  
CPC Seminar  
Surgery Grand Rounds

**Archives**

The University of Arizona College of Medicine  
The University of Arizona College of Nursing  
The University of Arizona College of Pharmacy  
Mel & Enid Zuckerman College of Public Health  
Centers of Excellence  
Arizona Telemedicine Program  
University Medical Center

**Coming Soon**

**27 AUG** CBIO Seminar Series  
Growth, Senescence and Immortalization of Cultured Human Mammary Epithelial Cells  
Martha Stampfer, PhD

**28 AUG** Frontiers in Medical Research Seminars  
Neural Basis for Emotion and Disease  
Richard D. Lane, MD, PhD  
Katalin M. Gothard, MD, PhD

**29 AUG** Surgery Grand Rounds  
Arizona's

**Search**

*biomedical*  
COMMUNICATIONS



The University of Arizona Health Sciences  
**Video Streaming**

Archived Programs    Teleconference Calendar

**Archives** [Block](#)

(Some archived events are not located on this site. You might find them in our old archives.)

**The University of Arizona College of Medicine**  
| College of Medicine Convocation | Events | Faculty Support | Grand Rounds | Miscellaneous | Pediatric Pulmonary Center | Research Support | Student Support |

**The University of Arizona College of Nursing**  
| Culturally Competent Care | End of Life Nursing Consortium | NURS 893 Symposium | NURS 779 Medicare Modernization Act & Rural Health Policy | Nursing Administration Research Conference (Fall) | Nursing Assembly | Nursing Cultural Wisdom Workshop | Nursing Grand Rounds | Nursing Lectures | Ph.D. Dissertation Defense | Research Seminars | U.S. - Mexico Border Health Issues |


**The University of Arizona College of Pharmacy**  
| College of Pharmacy Events | Lectures | Miscellaneous |

**Mel & Enid Zuckerman College of Public Health**  
| Arizona Center for Public Health Preparedness | Arizona Clinical Research Training Program | Making Professional Presentations | Public Health Seminars | Rural Health Office Programs | Winter Graduation |

**Centers of Excellence**  
| Arizona Arthritis Center | Arizona Cancer Center | Arizona Center on Aging | Valley Fever Center for Excellence | Women's Health |

**Arizona Telemedicine Program**

**<https://distance.telemedicine.arizona.edu/default.aspx>**



**Arizona Telemedicine Program Distance Education Site**

Please select the link to download a desired document. You will need Acrobat Reader to view and print these files.

Click [here](#) to download Acrobat Reader.

**ATP Clinical Care Conference Series Grand Rounds**

[Clinical Care Eval Form](#)

[Clinical Care Sign In Form](#)

**ATP Informatics Grand Rounds**

[Informatics Eval Form](#)

[Informatics Sign In Form](#)

**ATP Native American Cardiology Grand Rounds**

[Cardiology Eval Form](#)

[Cardiology Sign In Form](#)

**Geriatrics Grand Rounds**

**ATP Links**

[Distance Education Calendar](#)

[Video Streaming](#)

[ATP Homepage](#)



## Evaluations Results

(Agree – disagree scale)

(n = 11896% agree)

Not able attend without ATP:

**95% agree**

Received new info:

**95% agree**

Teaching tech. conducive:

**93% agree**

Objectives met:

**93% agree**

Company/product bias:

**85% disagree**

Relevant to practice:

**85% agree**



© 2018 ARIZONA TELEMEDICINE PROGRAM

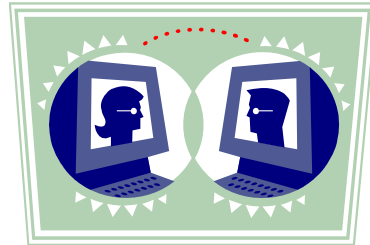


## Administrative Events



## Types of Administrative Events

- Bioterrorism Task Force
- Statewide or Country Roundtables
  - Fires
  - West Nile Virus
  - Diabetes
- Special Interest
  - IHS
  - ADHS
  - CRS (HRSA)
  - ADOC



© 2018 ARIZONA TELEMEDICINE PROGRAM



### Event Request Form

Date: \_\_\_\_\_ Coordinator requesting conference: \_\_\_\_\_

Company Name: \_\_\_\_\_

Location of videoconferencing equipment (address and room): \_\_\_\_\_

E-mail address: \_\_\_\_\_ Phone number: \_\_\_\_\_

Are you a member of the ATP network?    Yes    No

If not, do you have ISDN capabilities?    Yes    No

Potential Conference Date(s) - Please list 3 potential dates:

1) \_\_\_\_\_ 2) \_\_\_\_\_ 3) \_\_\_\_\_

Start time: \_\_\_\_\_ End Time \_\_\_\_\_

Are there any connection or long distance fees required?    Yes    No



© 2018 ARIZONA TELEMEDICINE PROGRAM



### Participating Site Information

Site #1

Name of receiving site: \_\_\_\_\_

Address of receiving site: \_\_\_\_\_

Are they members of the Arizona Telemedicine Program Network? Yes No

If not, what connection capabilities do they have? \_\_\_\_\_

Receiving site contact person: \_\_\_\_\_

Receiving site's contact person phone number: \_\_\_\_\_

Receiving site's contact person e-mail address: \_\_\_\_\_

Comments: \_\_\_\_\_



© 2018 ARIZONA TELEMEDICINE PROGRAM



## Video Conference Rules



1. Always assume that your microphone is on
2. Always assume that someone can see you



© 2018 ARIZONA TELEMEDICINE PROGRAM



## Barriers

- Time zone differences
- Room size
- Reduced travel



## Benefits

- Cost savings (travel / registration fees)
- Reduced time away from work
- Wider variety of opportunities
- Convenience



ARIZONA  
TELEMEDICINE  
PROGRAM



Thank you!

[tskinner@telemedicine.arizona.edu](mailto:tskinner@telemedicine.arizona.edu)

© 2018 ARIZONA TELEMEDICINE PROGRAM